

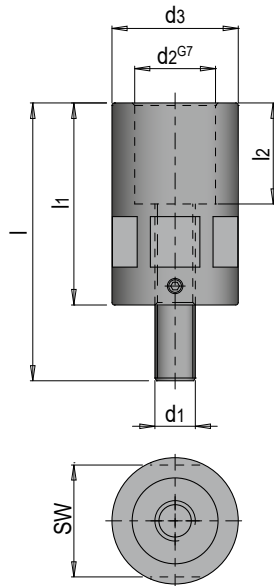
HWS 264



Spannhakenaufnahme

Hook clamp holder

- » Schwarz beschichtet
- » Zum Spannen von hohen Werkstücken
- » Black coating
- » For clamping of tall workpieces



Mat.: Stahl / Steel

d2	l2	d3	l	SW	d1	l1	Nr. / No.
25	40	40	110	36	M12	80	HWS 264/12/ 80
			130			100	HWS 264/12/100
32		50	110	46	M16	80	HWS 264/16/ 80
			130			100	HWS 264/16/100

