

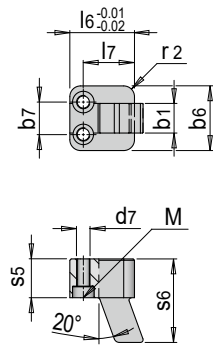
E 33605



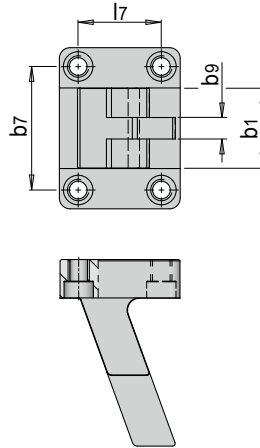
Schließkeil

Cotter

Typ A



Typ B

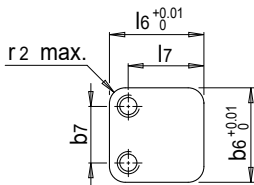


Mat.: 1.2767 ≈ 48 HRC

Typ / Type	s5	b6	l6	r2	s6	b7	d7	M	l7	b9	b1	Nr. / No.
A	14.5	24	24	5	31	12	M5	M4	19	-	11	E 33605/11
A	14.5	34	32	6	36.5	20	M8	M6	25	-	21	E 33605/21
B	14.5	60	45	7	70	46	M8	M6	31	8	30	E 33605/30

1) 3: Bei Bedarf E 33606 zum Abstimmen verwenden. / 3: Use E 33606 for adjustment if required

Typ A



Typ B

