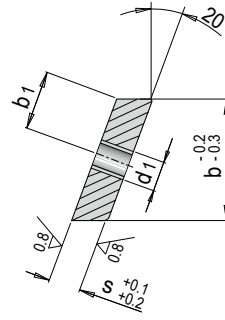
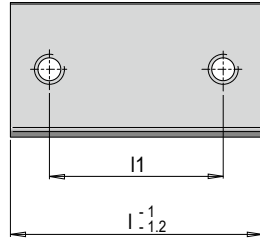


E 3031



Druckplatte für Schließkeil, mit Gewinde

Wear plate for cotter, with thread



3.2

Mat.: 1.2842

≈ 60 HRC

b1	d1	s	l1 ¹⁾	b	l	Nr./No.
3	M3	4	-	7	12	E 3031/ 7/12
					16	E 3031/ 7/16
					20	E 3031/ 7/20
					25	E 3031/ 7/25
4	M4	4	-	9	12	E 3031/ 9/12
					16	E 3031/ 9/16
					20	E 3031/ 9/20
					25	E 3031/ 9/25
5	M4	4	20	11	32	E 3031/ 9/32
			-		12	E 3031/11/12
			-		16	E 3031/11/16

1) l1: " - " Eine Bohrung mittig / l1: " - " One screw hole, centred