




E 2828



Brücke, steckbar, mit Kupplungen, System RPL-Stäubli

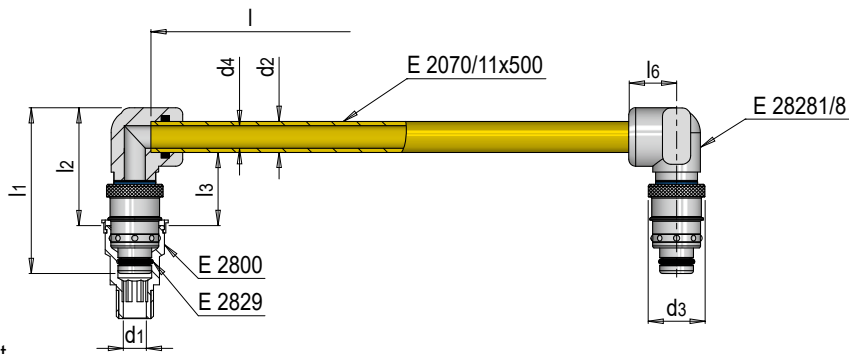
Bridge, plug-in type with couplers, RPL-Stäubli system

STÄUBLI

-  90°C
-  90°C
-  10 bar

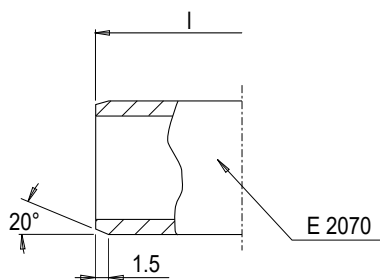
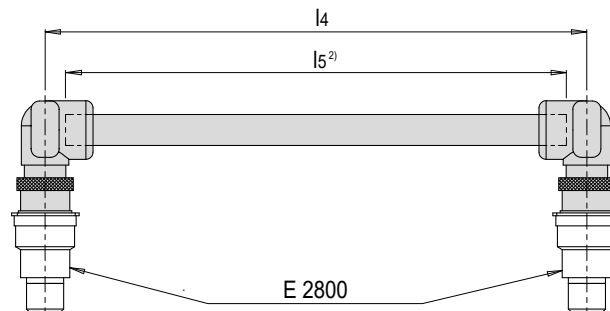


Mat.: Messing vernickelt
brass, nickel-plated



l1	d2	l2	d3	l3	d4	l6	d1	l ¹⁾	Nr. / No.
59	11	43	20	26.5	8	17	8	500	E 2828/ 8/500

1) l: Lieferlänge - kundenseitig kürzen und Fase anbringen / l: Standard length of the product supplied - shortening and chamfering to be done by the customer



2) l5: $l5 = (l4 - 10 \text{ mm}) \pm 0.5$