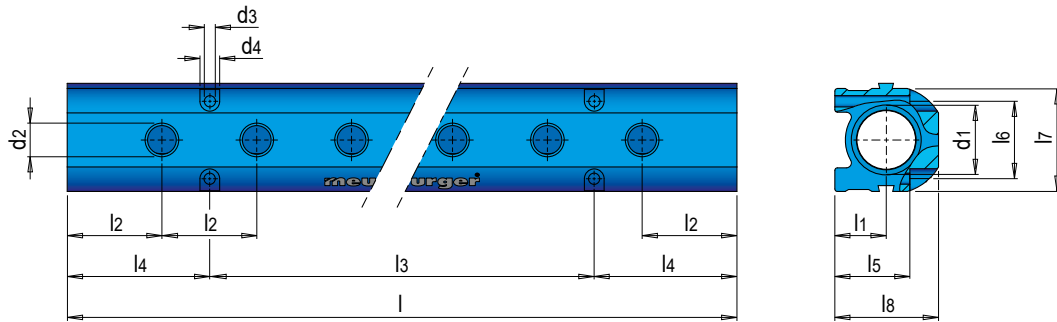


E 2165



Verteilerblock

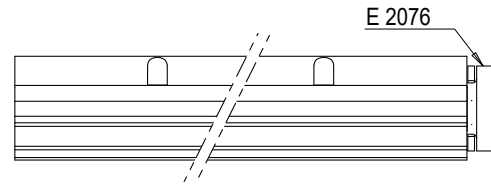
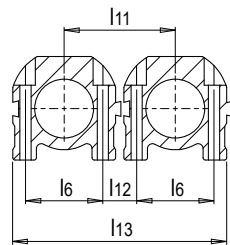
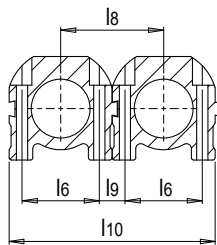
Manifold



Mat.: Aluminium, eloxiert
Aluminium, anodised

p max. = 15 bar t max. = 200°C

Farbe / Colour	l	l1	l2	d3	l3	d4	l4	l5	l6	l7	l8	d1	d2	Ausgänge / Outlets	Nr. / No.
● blau / blue	190	20.6	38	4.5	75.6	7.9	57.2	30	31	41.3	41.5	G3/4"	G1/4"	4	E 2165/3/4/1/4/ 4/B
● rot / red	266				151.6										E 2165/3/4/1/4/ 4/R
● blau / blue					6										E 2165/3/4/1/4/ 6/B
● rot / red	342				227.6										E 2165/3/4/1/4/ 6/R
● blau / blue					8										E 2165/3/4/1/4/ 8/B
● rot / red	418				303.6										E 2165/3/4/1/4/ 8/R
● blau / blue					10										E 2165/3/4/1/4/10/B
● rot / red	190				75.6								G3/8"		E 2165/3/4/1/4/10/R
● blau / blue					4										E 2165/3/4/3/8/ 4/B
● rot / red	266				151.6										E 2165/3/4/3/8/ 4/R
● blau / blue					6										E 2165/3/4/3/8/ 6/B
● rot / red	342				277.6										E 2165/3/4/3/8/ 6/R
● blau / blue					8										E 2165/3/4/3/8/ 8/B
● rot / red															E 2165/3/4/3/8/ 8/R



l8	l9	l10	l11	l12	l13
41,3	10,3	82,6	45	14	86,3