

**E 20749**

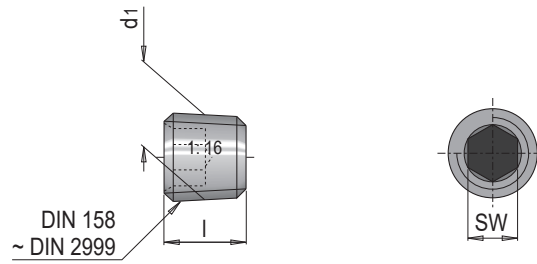


**Verschlusschraube konisch aus Edelstahl**

*Screw plug tapered from stainless steel*

» Gewinde gerändelt

» Knurled thread



Mat.: 1.4305

DIN 906

p max. = 40 bar

SW	l	d1	Nr. / No.
4	8	M 8 x 0,75	E 20749/ 8/ 8
5		M10 x 1	E 20749/ 8/ 10
6		M12 x 1,5	E 20749/ 8/ 12
7	10	M14 x 1,5	E 20749/10/ 14
5		R 1/8"	E 20749/ 8/1/8
7	10	R 1/4"	E 20749/10/1/4
8		R 3/8"	E 20749/10/3/8
10		R 1/2"	E 20749/10/1/2