



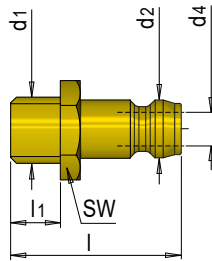
E 2020..



Anschlussnippel verschließend

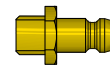
Shut-off fitting

-  Oil 200°C
-  Water 150°C
- PN** 15 bar



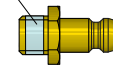
Messing (Zollgewinde vernickelt)
Brass (Imperial threads are nickel-plated)

Edelstahl
Stainless steel

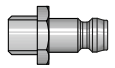


E 2020

Dichtmittel
Sealant



E 2020 D

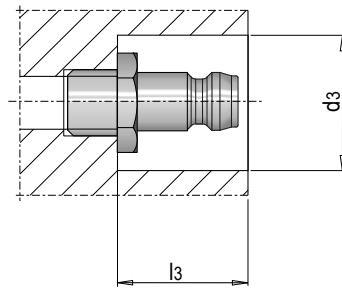


E 20209

Mat.: 2.0401 (CuZn)

Mat.: 1.4305

SW	l	l1	d4	d2	d1	Nr. / No.	Nr. / No.	Nr. / No.
15	29	12	6	9	M14 x 1,5	E 2020/ 9/ 14	E 2020 D/ 9/ 14	E 20209/ 9/ 14
					G 1/4"	E 2020/ 9/1/4	E 2020 D/ 9/1/4	E 20209/ 9/1/4
					G 3/8"	E 2020/ 9/3/8	E 2020 D/ 9/3/8	E 20209/ 9/3/8
17	30	12	9	13	M16 x 1,5	E 2020/13/ 16	E 2020 D/13/ 16	E 20209/13/ 16
					G 3/8"	E 2020/13/3/8	E 2020 D/13/3/8	E 20209/13/3/8
					G 1/2"	E 2020/13/1/2	E 2020 D/13/1/2	E 20209/13/1/2
22	31	16	13	19	M24 x 1,5	E 2020/19/ 24		
27	51				G 1/2"	E 2020/19/1/2	E 2020 D/19/1/2	
22	47				G 3/4"	E 2020/19/3/4		
27	51	16						



d2	d1	l3	d3
9	M14 x 1,5	18	22
	G 1/4"		
	G 3/8"	19	26
M16 x 1,5			
G 3/8"			
13	G 1/2"	20	32
	M24 x 1,5		
	G 1/2"	36	38
G 3/4"			