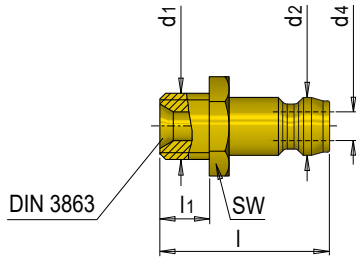


E 2000..



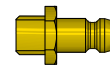
Anschlussnippel

Fitting

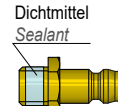


Messing (Zollgewinde vernickelt)
Brass (Imperial threads are nickel-plated)

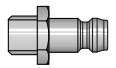
Edelstahl
Stainless steel



E 2000



E 2000 D

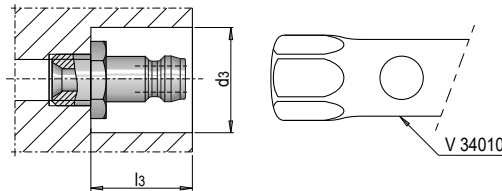


E 20009

Mat.: 2.0401 (CuZn)

Mat.: 1.4305

SW	l	l1	d4	d2	d1	Nr. / No.	Nr. / No.	Nr. / No.
11	24	7	4.5	9	M 8 x 0,75	E 2000/ 9/ 8		E 20009/ 9/ 8
			5		M 9 x 1	E 2000/ 9/ 9		
			6		M10 x 1	E 2000/ 9/ 10	E 2000 D/ 9/ 10	E 20009/ 9/ 10
15	26	9	9	13	M11 x 1	E 2000/ 9/11		
					M14 x 1,5	E 2000/ 9/ 14	E 2000 D/ 9/ 14	E 20009/ 9/ 14
					G 1/8"	E 2000/ 9/1/8	E 2000 D/ 9/1/8	E 20009/ 9/1/8
15	26	9	9	13	G 1/4"	E 2000/ 9/1/4	E 2000 D/ 9/1/4	E 20009/ 9/1/4
17	27	9			G 3/8"	E 2000/ 9/3/8	E 2000 D/ 9/3/8	E 20009/ 9/3/8
15	26	9			M14 x 1,5	E 2000/13/ 14	E 2000 D/13/ 14	E 20009/13/ 14
17	26	9	9	13	M16 x 1,5	E 2000/13/ 16	E 2000 D/13/ 16	E 20009/13/ 16
15					G 1/4"	E 2000/13/1/4	E 2000 D/13/1/4	E 20009/13/1/4
17					G 3/8"	E 2000/13/3/8	E 2000 D/13/3/8	E 20009/13/3/8
22	31	12	13	19	G 1/2"	E 2000/13/1/2	E 2000 D/13/1/2	E 20009/13/1/2
27	51	16			M24 x 1,5	E 2000/19/ 24		
22	47	12			G 1/2"	E 2000/19/1/2	E 2000 D/19/1/2	
27	51	16			G 3/4"	E 2000/19/3/4	E 2000 D/19/3/4	



d2	d1	l3	d3		
9	M 8 x 0,75	18	20		
	M 9 x 1				
	M10 x 1				
	M11 x 1		20		
	M14 x 1,5				
	G 1/8"				
	G 1/4"				
13	G 3/8"	18	26		
	M14 x 1,5				
	M16 x 1,5				
	G 1/4"				
	G 3/8"				
19	G 1/2"	21	32		
	M24 x 1,5			36	38
	G 1/2"				
	G 3/4"				