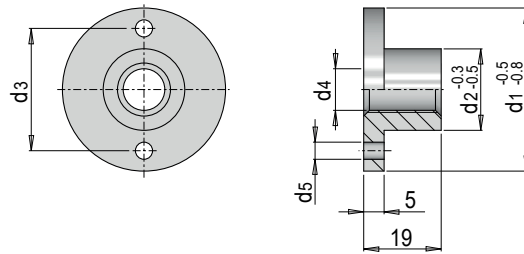


E 15664

Gewindeflansch

Threaded flange



Mat.: 1.0501 \approx 52 HRC

d2	d3	d4	d5	d1	Nr. / No.
10	14	M 6	3.2	20	E 15664/20
12.5	18	M 8	4.2	25	E 15664/25
16	25	M10		32	E 15664/32
20	30	M12		40	E 15664/40
25	40	M16		50	E 15664/50