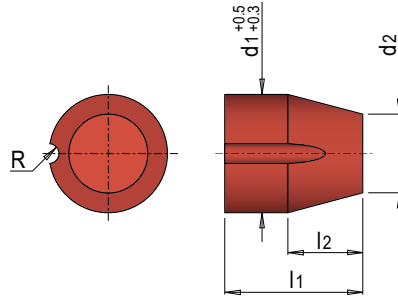


E 15601



Elastomer - Druckstück

Elastomer thrust piece

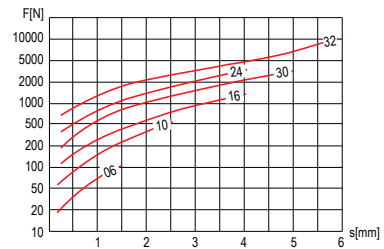
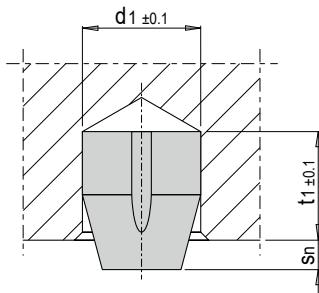


Mat.: PUR (90 Shore A)

t max = 80°C

Fn max. [N]	Sn ¹⁾	R	t1	l1	d2	l2	d1	Nr. / No.
100	1.5	-	8	9.5	3.6	4.5	6	E 15601/ 6
450	2.5	1	13	15.5	6	7.5	10	E 15601/10
1500	4.0	1.5	21	25	9.5	12	16	E 15601/16
3000		2	30	35	18	10	24	E 15601/24
12000	5.0	2.5	30	35	20	19	30	E 15601/30
	6.0	3	26	32	24	14	32	E 15601/32

1) Sn: Max. zulässiger Federweg / Sn: maximum permissible travel



i 1 N = 0.1 daN = 0.102 kg



- » Zum sicheren Abheben und Abstreifen von Blechteilen
- » Hohe Arbeitskraft bei kleinen Einbaumaßen
- » Lange Lebensdauer durch hohe Abriebfestigkeit und Bruchsicherheit
- » For lifting and pulling the punched parts safely off the strip
- » High-performance in spite of the small fitting dimensions
- » Long service life due to the high abrasion resistance and high resistance to fracture