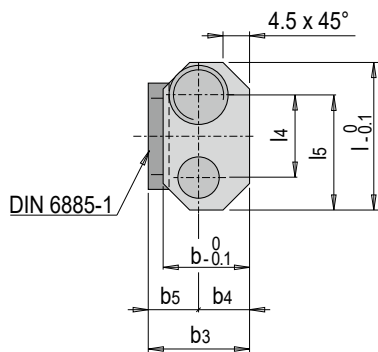


E 1520

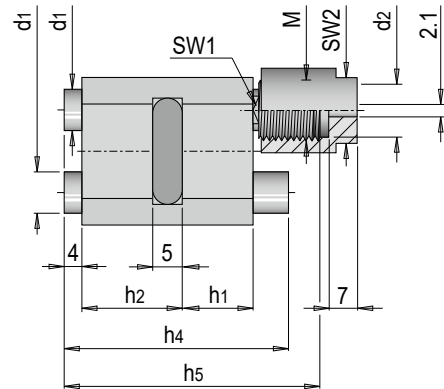


Multi-Hubverlängerung

Multi-stroke accelerated ejection device

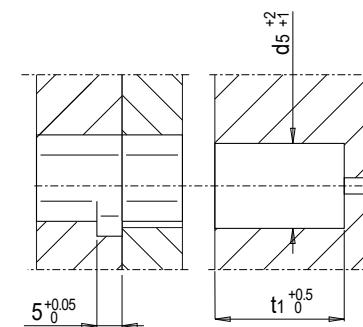
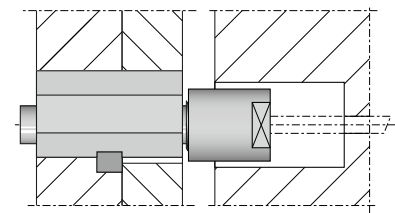
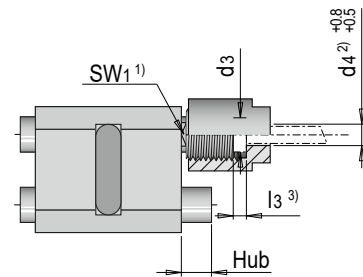
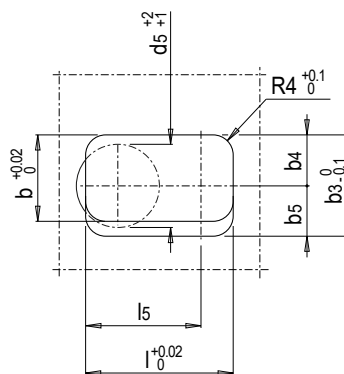
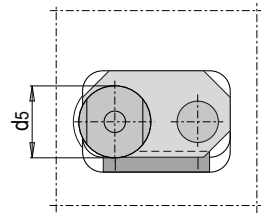
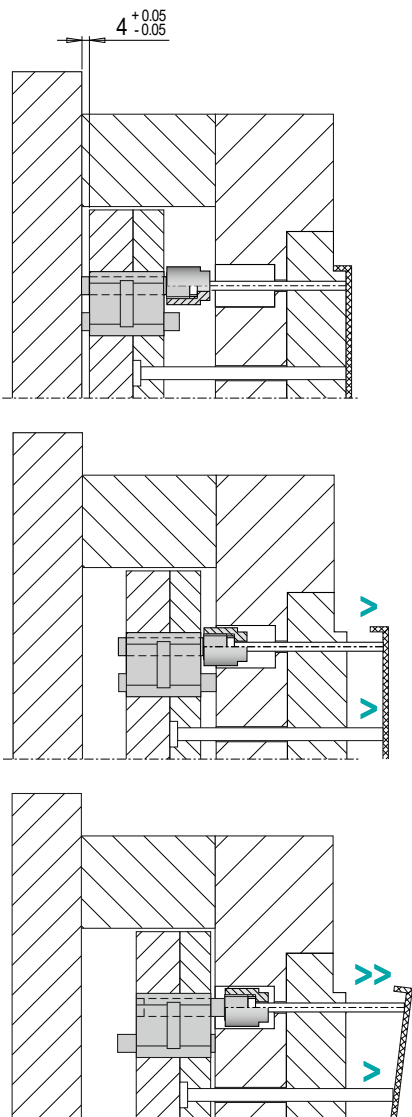


DIN 6885-1



Mat.: 1.2312 $\approx 1080 \text{ N/mm}^2$

SW1	SW2	b	b3	b4	b5	l	l4	l5	M	d1	d2	h4	h5	Hub / Stroke	h1	h2	Nr. / No.
6	10	16	20	10	10	25	14	19.5	M10x1	7	9	39	43	6	12	17	E 1520/12/17
												57	53	14	17	22	E 1520/17/22
9	15	22	26	13	13	38	20	29	M16x1	10	15	73	63	20	22	27	E 1520/22/27

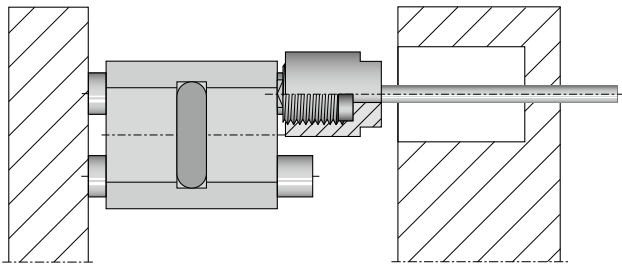


Nr. / No.	d5	l3 max. ³⁾	t1
E 1520/12/17	12	5	23,5 + l3
E 1520/17/22			31,5 + l3
E 1520/22/27	18		37,5 + l3

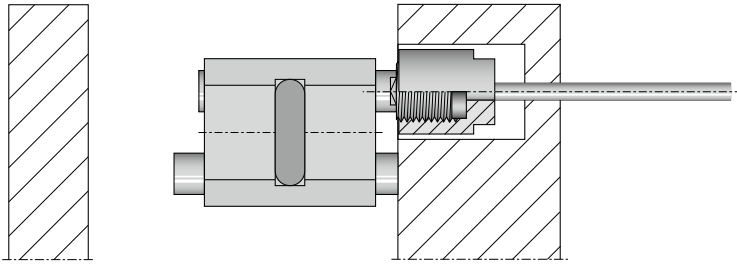
1) SW1: Beim Anziehen gegenhalten / SW1: Hold when tightening

2) d4: Durchmesser von Auswerferstift aufbohren / d4: Machine to diameter of ejector pin

3) l3 max.: Kopflänge / l3 max.: Length of ejector head

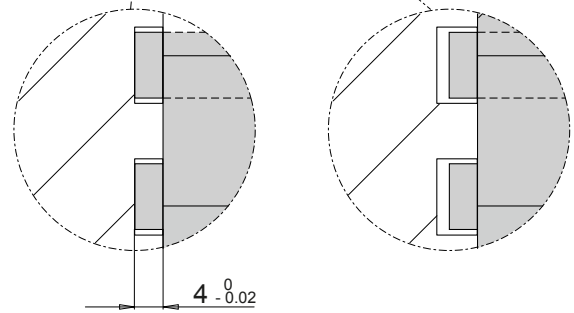
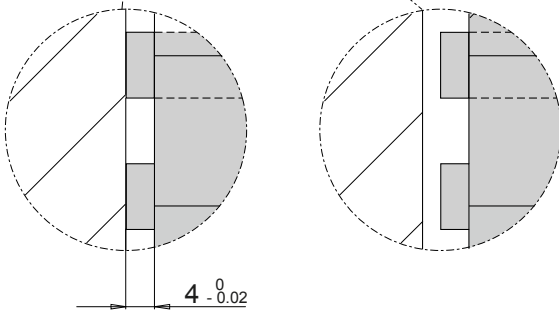
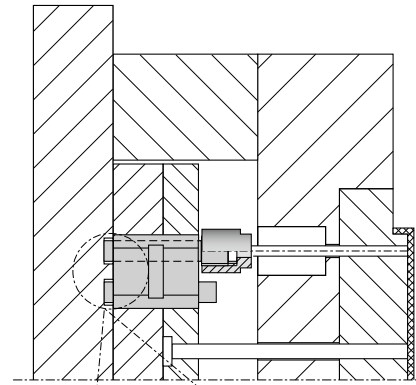
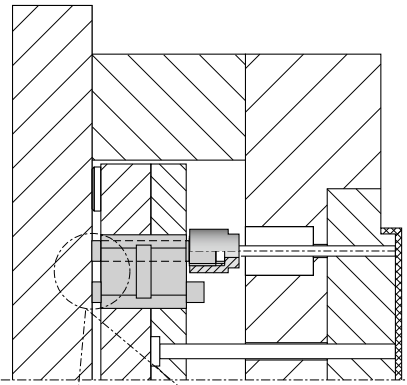


$F \leq 3.000 \text{ N}$



F max.

Nr. / No.	F max.
E 1520/12/17	200 N
E 1520/17/22	300 N
E 1520/22/27	400 N



i Das starre Verbinden mehrerer Multi-Hubverlängerungen mit Abstreif- bzw. Formplatten ist zu vermeiden.
 A fixed connection of several multi-stroke accelerated ejection devices with stripper plates or moulding plates should be avoided.