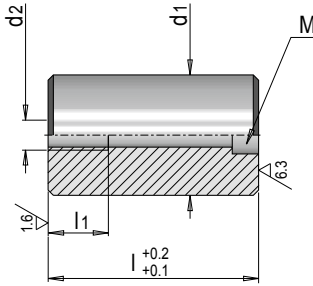


E 1510



Stützbolzen

Support pillar



Mat.: 1.1730 $\approx 660 \text{ N/mm}^2$

l1	d2	M	d1	l	Nr. / No.				
16	M 8	M 6	25	36	E 1510/25 x 36				
				46	E 1510/25 x 46				
				56	E 1510/25 x 56				
				66	E 1510/25 x 66				
				76	E 1510/25 x 76				
				86	E 1510/25 x 86				
				96	E 1510/25 x 96				
				116	E 1510/25 x 116				
				136	E 1510/25 x 136				
				156	E 1510/25 x 156				
				20	M10	M 8	32	36	E 1510/32 x 36
								46	E 1510/32 x 46
56	E 1510/32 x 56								
66	E 1510/32 x 66								
76	E 1510/32 x 76								
86	E 1510/32 x 86								
96	E 1510/32 x 96								
116	E 1510/32 x 116								
136	E 1510/32 x 136								
156	E 1510/32 x 156								
176	E 1510/32 x 176								
20	M10	M 8	40					46	E 1510/40 x 46
				56	E 1510/40 x 56				
				66	E 1510/40 x 66				
				76	E 1510/40 x 76				
				86	E 1510/40 x 86				
				96	E 1510/40 x 96				
				116	E 1510/40 x 116				
				136	E 1510/40 x 136				
				156	E 1510/40 x 156				
				176	E 1510/40 x 176				
				20	M10	M 8	50	46	E 1510/50 x 46
								56	E 1510/50 x 56
66	E 1510/50 x 66								
76	E 1510/50 x 76								
86	E 1510/50 x 86								
96	E 1510/50 x 96								
116	E 1510/50 x 116								
136	E 1510/50 x 136								
156	E 1510/50 x 156								
176	E 1510/50 x 176								
196	E 1510/50 x 196								
20	M10	M 8	60					56	E 1510/60 x 56
				66	E 1510/60 x 66				
				76	E 1510/60 x 76				
				86	E 1510/60 x 86				
				96	E 1510/60 x 96				
				116	E 1510/60 x 116				
				136	E 1510/60 x 136				
				156	E 1510/60 x 156				
				176	E 1510/60 x 176				
				196	E 1510/60 x 196				
				236	E 1510/60 x 236				
				25	M12	M10	70	66	E 1510/70 x 66
76	E 1510/70 x 76								
86	E 1510/70 x 86								
96	E 1510/70 x 96								
116	E 1510/70 x 116								
136	E 1510/70 x 136								
156	E 1510/70 x 156								
176	E 1510/70 x 176								

l1	d2	M	d1	l	Nr. / No.
25	M12	M10	70	196	E 1510/70 x 196
				236	E 1510/70 x 236
				276	E 1510/70 x 276
25	M12	M10	80	76	E 1510/80 x 76
				86	E 1510/80 x 86
				96	E 1510/80 x 96
				116	E 1510/80 x 116
				136	E 1510/80 x 136
				156	E 1510/80 x 156
				176	E 1510/80 x 176
				196	E 1510/80 x 196
25	M12	M10	100	236	E 1510/80 x 236
				276	E 1510/80 x 276
				96	E 1510/100 x 96
				116	E 1510/100 x 116
				136	E 1510/100 x 136
				156	E 1510/100 x 156
				176	E 1510/100 x 176
				196	E 1510/100 x 196
236	E 1510/100 x 236				
276	E 1510/100 x 276				