

## E 1322

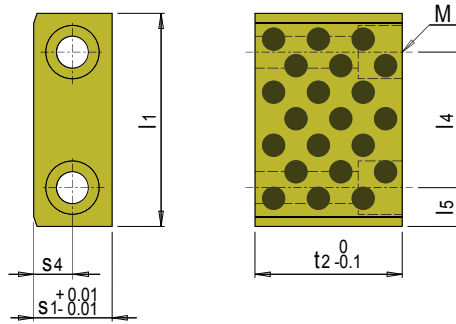


Gleitplatte für Flachführung, horizontal, wartungsfrei

Gliding plate for flat guiding unit, horizontal, self lubricating

» Graphiteinsätze für lebenslange Schmierung

» Graphite inserts for permanent lubrication

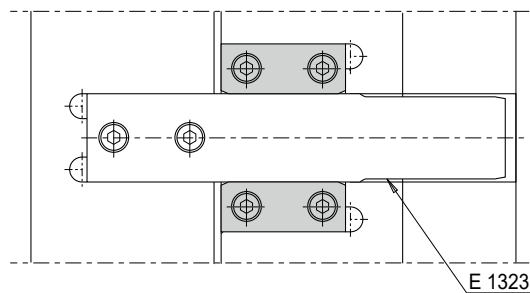


Mat.: 2.0598

≈ 200 HB / Graphit / graphite

t max. = 200°C

l1	l4	l5	M	s4	t2	s1	Nr. / No.
26	14	6	M 4	5	14.2	10	E 1322/10
34	18	8	M 5	6	22.3	12	E 1322/12
44	28	8	M 6	8	30.4	16	E 1322/16
62	38	12	M 8	10	38.7	20	E 1322/20
80	48	16	M10	12.5	51.1	25	E 1322/25
98	58	20	M12	16	71.5	32	E 1322/32



**i** Initialschmierung mit VGM 160  
Initial lubrication with VGM 160