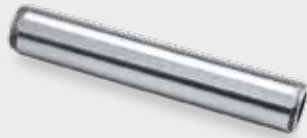
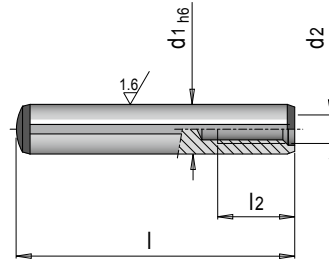


E 1303



Zylinderstift h6 für Sackloch

Dowel pin h6 for blind hole



ISO 8735 (DIN 7979) ≈ 60 HRC

d2	l2	d1	l	Nr. / No.
M 3	6	5	10	E 1303/ 5 x 10
			12	E 1303/ 5 x 12
			16	E 1303/ 5 x 16
			20	E 1303/ 5 x 20
			24	E 1303/ 5 x 24
			28	E 1303/ 5 x 28
			32	E 1303/ 5 x 32
			36	E 1303/ 5 x 36
			40	E 1303/ 5 x 40
			M 4	6
16	E 1303/ 6 x 16			
20	E 1303/ 6 x 20			
24	E 1303/ 6 x 24			
28	E 1303/ 6 x 28			
32	E 1303/ 6 x 32			
36	E 1303/ 6 x 36			
40	E 1303/ 6 x 40			
45	E 1303/ 6 x 45			
50	E 1303/ 6 x 50			
M 5	8	8	16	E 1303/ 8 x 16
			20	E 1303/ 8 x 20
			24	E 1303/ 8 x 24
			28	E 1303/ 8 x 28
			32	E 1303/ 8 x 32
			40	E 1303/ 8 x 40
			50	E 1303/ 8 x 50
			60	E 1303/ 8 x 60
			70	E 1303/ 8 x 70
			M 6	10
28	E 1303/10 x 28			
24	E 1303/10 x 24			
32	E 1303/10 x 32			
40	E 1303/10 x 40			
50	E 1303/10 x 50			
60	E 1303/10 x 60			
12	24	E 1303/12 x 24		
	28	E 1303/12 x 28		
	32	E 1303/12 x 32		
	40	E 1303/12 x 40		
	50	E 1303/12 x 50		
	60	E 1303/12 x 60		
	80	E 1303/12 x 80		
M 8	12	16	40	E 1303/16 x 40
			50	E 1303/16 x 50
			60	E 1303/16 x 60
			80	E 1303/16 x 80
			100	E 1303/16 x 100
M10	16	20	50	E 1303/20 x 50
			60	E 1303/20 x 60
			80	E 1303/20 x 80
			100	E 1303/20 x 100