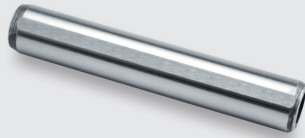
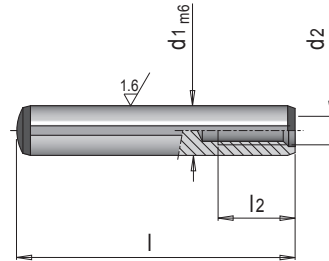


E 1302



Zylinderstift m6 für Sackloch

Dowel pin m6 for blind hole



ISO 8735 (DIN 7979) ≈ 60 HRC

d2	l2	d1	l	Nr. / No.		
M 3	6	4	12	E 1302/ 4 x 12		
			16	E 1302/ 4 x 16		
			20	E 1302/ 4 x 20		
			24	E 1302/ 4 x 24		
			30	E 1302/ 4 x 30		
		36	E 1302/ 4 x 36			
		5	10	E 1302/ 5 x 10		
			12	E 1302/ 5 x 12		
			14	E 1302/ 5 x 14		
			16	E 1302/ 5 x 16		
			18	E 1302/ 5 x 18		
			20	E 1302/ 5 x 20		
			24	E 1302/ 5 x 24		
			28	E 1302/ 5 x 28		
			30	E 1302/ 5 x 30		
			32	E 1302/ 5 x 32		
			36	E 1302/ 5 x 36		
			40	E 1302/ 5 x 40		
			45	E 1302/ 5 x 45		
			50	E 1302/ 5 x 50		
			55	E 1302/ 5 x 55		
		M 4	6	6	12	E 1302/ 6 x 12
					14	E 1302/ 6 x 14
					16	E 1302/ 6 x 16
					18	E 1302/ 6 x 18
20	E 1302/ 6 x 20					
22	E 1302/ 6 x 22					
24	E 1302/ 6 x 24					
26	E 1302/ 6 x 26					
28	E 1302/ 6 x 28					
30	E 1302/ 6 x 30					
32	E 1302/ 6 x 32					
36	E 1302/ 6 x 36					
40	E 1302/ 6 x 40					
45	E 1302/ 6 x 45					
50	E 1302/ 6 x 50					
55	E 1302/ 6 x 55					
M 5	8	8	16	E 1302/ 8 x 16		
			18	E 1302/ 8 x 18		
			20	E 1302/ 8 x 20		
			22	E 1302/ 8 x 22		
			24	E 1302/ 8 x 24		
			26	E 1302/ 8 x 26		
			28	E 1302/ 8 x 28		
			30	E 1302/ 8 x 30		
			32	E 1302/ 8 x 32		
			36	E 1302/ 8 x 36		
			40	E 1302/ 8 x 40		
			45	E 1302/ 8 x 45		
			50	E 1302/ 8 x 50		
			55	E 1302/ 8 x 55		
			M 6	10	10	16
20	E 1302/10 x 20					

d2	l2	d1	l	Nr. / No.
M 6	10	10	24	E 1302/10 x 24
			28	E 1302/10 x 28
			30	E 1302/10 x 30
			32	E 1302/10 x 32
			36	E 1302/10 x 36
			40	E 1302/10 x 40
			45	E 1302/10 x 45
			50	E 1302/10 x 50
			55	E 1302/10 x 55
			60	E 1302/10 x 60
			70	E 1302/10 x 70
			80	E 1302/10 x 80
		90	E 1302/10 x 90	
		100	E 1302/10 x 100	
		120	E 1302/10 x 120	
		12	24	E 1302/12 x 24
			28	E 1302/12 x 28
			32	E 1302/12 x 32
			36	E 1302/12 x 36
			40	E 1302/12 x 40
			45	E 1302/12 x 45
			50	E 1302/12 x 50
			55	E 1302/12 x 55
			60	E 1302/12 x 60
			70	E 1302/12 x 70
80	E 1302/12 x 80			
90	E 1302/12 x 90			
100	E 1302/12 x 100			
M 8	12	14	40	E 1302/14 x 40
			50	E 1302/14 x 50
			60	E 1302/14 x 60
			70	E 1302/14 x 70
			80	E 1302/14 x 80
		100	E 1302/14 x 100	
		16	30	E 1302/16 x 30
			32	E 1302/16 x 32
			36	E 1302/16 x 36
			40	E 1302/16 x 40
45	E 1302/16 x 45			
M10	16	20	50	E 1302/20 x 50
			60	E 1302/20 x 60
			70	E 1302/20 x 70
			80	E 1302/20 x 80
			90	E 1302/20 x 90
			100	E 1302/20 x 100
			120	E 1302/20 x 120

Sichern mit E 1296 / Demontage mit V 28440
Secure with E 1296 / Dismantling with V 28440