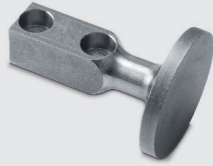
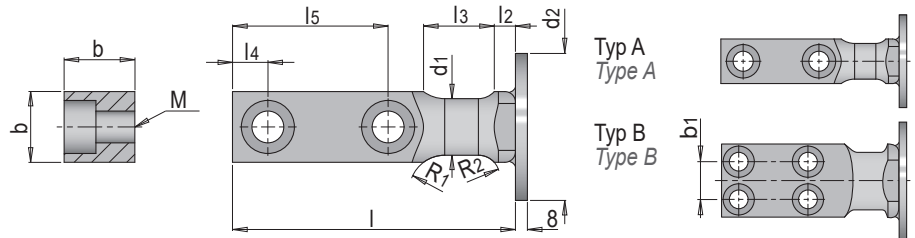


E 1284



## Tragzapfen mit Seilsicherung

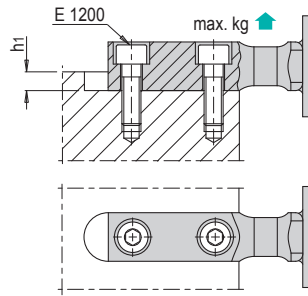
Lifting stud with cable securing device



Mat.: 1.1191  $\approx 700 \text{ N/mm}^2$



| Typ /<br>Type | E 1200/.. | max. kg | b   | l   | b1 | h1 | d2  | l2 | l3 | l4 | l5  | M   | R1 | R2   | d1  | Nr. / No.  |
|---------------|-----------|---------|-----|-----|----|----|-----|----|----|----|-----|-----|----|------|-----|------------|
| A             | 8x 25     | 320     | 20  | 80  | -  | 6  | 60  | 6  | 20 | 10 | 44  | M 8 | 10 | 6    | 16  | E 1284/ 16 |
|               | 10x 30    | 630     | 25  | 90  | -  | 8  | 70  | 8  | 25 |    | 47  | M10 | 12 | 8    | 20  | E 1284/ 20 |
|               | 12x 40    | 1250    | 35  | 100 | -  | 10 |     |    | 30 | 12 | 50  | M12 | 15 | 10   | 25  | E 1284/ 25 |
|               | 16x 45    | 2000    | 40  | 120 | -  | 12 | 110 | 10 | 32 | 16 | 62  | M16 |    |      | 32  | E 1284/ 32 |
|               | 20x 60    | 3200    | 50  | 140 | -  | 14 |     |    | 40 | 18 | 72  | M20 | 20 | 12.5 | 40  | E 1284/ 40 |
|               | 24x 70    | 5000    | 60  | 160 | -  | 14 | 150 | 12 | 45 | 22 | 81  | M24 |    |      | 50  | E 1284/ 50 |
| B             | 20x 90    | 8000    | 80  | 200 | 40 | 16 | 150 | 12 | 50 | 20 | 98  | M20 | 25 | 15   | 63  | E 1284/ 63 |
|               | 24x120    | 12500   | 100 | 250 | 50 | 18 |     | 15 | 65 | 25 | 125 | M24 | 35 | 20   | 80  | E 1284/ 80 |
|               | 30x140    | 20000   | 120 | 300 | 60 | 20 |     |    | 80 | 30 | 155 | M30 | 40 | 25   | 100 | E 1284/100 |



**i** Aus Sicherheitsgründen stets berücksichtigen, dass zwei Tragzapfen das gesamte Werkzeuggewicht tragen müssen.  
For safety reasons, always take into account that two supporting lifting studs must carry the weight of the entire die.