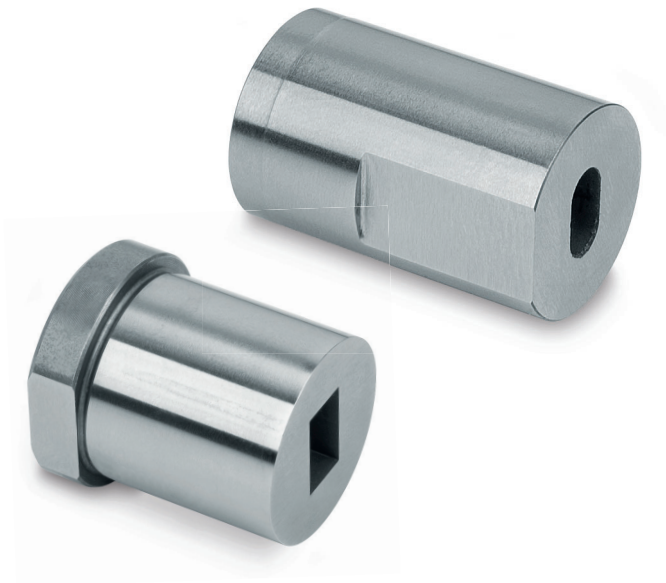


# KONFIGURIERBARE SCHNEIDBUCHSEN

## CONFIGURABLE CUTTING BUSHES

Konfigurieren Sie jetzt schnell und einfach Ihre Schneidbuchsen passend zu den Stempeln mit Kontur über unseren Konfigurator

Configure your cutting bushes quickly and easily to match the punches with contour via our configurator



**meusburger**

Standards for your success.

ES 5720...



Schneidbuchse ohne Bund

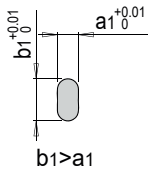
Cutting bush without collar

Verdrehsicherung (AT)<sup>5)</sup>  
anti-twist lock (AT)

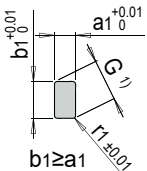
ES 5720



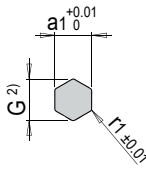
ES 5720O



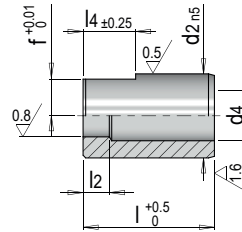
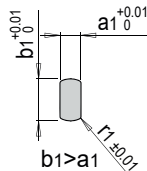
ES 5720R



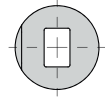
ES 5720H



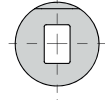
ES 5720F



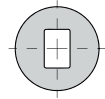
0°



90°



ohne  
without



Mat.: 1.3343 (HSS) ≈64 HRC

≈ISO 8977

l2	d4	d1 min. / a1 min. <sup>3)</sup>	d1 max. / b1 max. <sup>3)</sup> / G max.	r1 min. <sup>4)</sup>	l4 min	l4 max	f	d2	l	Nr./No.	
4	4	1.4	3.5	0.13	4	16	3.5	8	16	ES 5720.../ 8 x 16	
						20			20	ES 5720.../ 8 x 20	
						25			25	ES 5720.../ 8 x 25	
						28			28	ES 5720.../ 8 x 28	
						32			32	ES 5720.../ 8 x 32	
						32			32	ES 5720.../ 8 x 32	
	5.8	5.3	1.6	7.5	0.13	4	16	4	10	16	ES 5720.../10 x 16
							20			20	ES 5720.../10 x 20
							25			25	ES 5720.../10 x 25
							28			28	ES 5720.../10 x 28
							32			32	ES 5720.../10 x 32
							32			32	ES 5720.../10 x 32
5	8	1.6	7.5	0.13	4	20	5.5	13	20	ES 5720.../13 x 20	
						25			25	ES 5720.../13 x 25	
						28			28	ES 5720.../13 x 28	
						32			32	ES 5720.../13 x 32	
						32			32	ES 5720.../13 x 32	
						32			32	ES 5720.../13 x 32	
	9.5	9	1.6	9	0.13	4	20	7	16	20	ES 5720.../16 x 20
							25			25	ES 5720.../16 x 25
							28			28	ES 5720.../16 x 28
							32			32	ES 5720.../16 x 32
							32			32	ES 5720.../16 x 32
							32			32	ES 5720.../16 x 32
8	12	1.9	11.3	0.13	4	20	8.5	20	20	ES 5720.../20 x 20	
						25			25	ES 5720.../20 x 25	
						28			28	ES 5720.../20 x 28	
						32			32	ES 5720.../20 x 32	
						32			32	ES 5720.../20 x 32	
						32			32	ES 5720.../20 x 32	
	17.3	16.6	1.9	16.6	0.13	4	20	11	25	20	ES 5720.../25 x 20
							25			25	ES 5720.../25 x 25
							28			28	ES 5720.../25 x 28
							32			32	ES 5720.../25 x 32
							32			32	ES 5720.../25 x 32
							32			32	ES 5720.../25 x 32
20.7	20	1.9	20	0.13	4	20	14	32	20	ES 5720.../32 x 20	
						25			25	ES 5720.../32 x 25	
						28			28	ES 5720.../32 x 28	
						32			32	ES 5720.../32 x 32	
						32			32	ES 5720.../32 x 32	
						32			32	ES 5720.../32 x 32	

1) G:  $G=2*r1+\sqrt{(a1-2*r1)^2+(b1-2*r1)^2}$

2) G:  $G=2*a1+\sqrt{(3)-2*((r1/\cos30^\circ)-r1)}$

3) d1, a1, b1: mögliche Stufung 0,01mm  
possible gradation 0.01mm

4) r1: mögliche Stufung 0,01mm - max. (a1/2)-0.05mm  
possible gradation 0.01mm - max. (a1/2)-0.05mm

5) AT: Verdrehsicherung bei runden Schneidbuchsen (ES 5720) nicht möglich  
Anti-twist protection not possible with round cutting bushes (ES 5720)

6) l4 max.:  $l4 \leq l-4$  oder  $l4=l$   
 $l4 \leq l-4$  or  $l4=l$



BESTELLBEISPIEL  
ORDERING EXAMPLE

Artikel / Item

- ES 5720/13x25 d1=6,05
- ES 5720O/13x25 a1=2,55 b1=6,05 l4=10,5 AT=0
- ▢ ES 5720R/13x25 a1=2,55 b1=6,05 r1=0,25 l4=25 AT=90
- ◇ ES 5720H/13x25 a1=2,55 r1=0,25
- ES 5720F/13x25 a1=2,55 b1=6,05 r1=0,25 l4=4,2 AT=0

ES 5722...



Schneidbuchse mit Bund

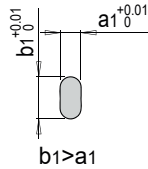
Cutting bush with collar

Verdrehsicherung (AT)<sup>5)</sup>  
anti-twist lock (AT)

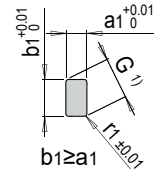
ES 5722



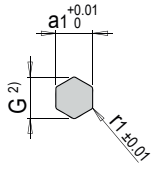
ES 5722O



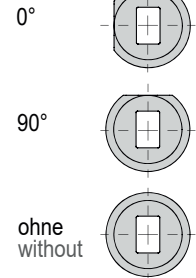
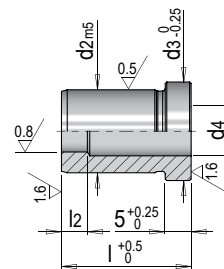
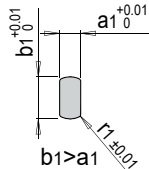
ES 5722R



ES 5722H



ES 5722F



Mat.: 1.3343 (HSS) ≈64 HRC

≈ISO 8977

l2	d3	d4	d1 min. / a1 min. <sup>3)</sup>	d1 max. / b1 max. <sup>3)</sup> / G max.	r1 min. <sup>4)</sup>	d2	l	Nr./No.		
4	11	4	1.4	3.5	0.13	8	16	ES 5722.../ 8 x 16		
							20	ES 5722.../ 8 x 20		
	25	ES 5722.../ 8 x 25								
	28	ES 5722.../ 8 x 28								
5	13	5.8	1.6	5.3	0.13	10	32	ES 5722.../ 8 x 32		
							16	ES 5722.../10 x 16		
	20	ES 5722.../10 x 20								
	25	ES 5722.../10 x 25								
8	16	8	1.9	7.5	0.13	13	28	ES 5722.../10 x 28		
							32	ES 5722.../10 x 32		
	19	9.5		9			0.13	16	20	ES 5722.../13 x 20
									25	ES 5722.../13 x 25
23	12	11.3	0.13	20	28	ES 5722.../13 x 28				
					32	ES 5722.../13 x 32				
28	17.3	16.6			0.13	25	20	ES 5722.../16 x 20		
							25	ES 5722.../16 x 25		
	35	20.7	20	0.13			32	28	ES 5722.../16 x 28	
								32	ES 5722.../16 x 32	
43	27.7	27	0.13		40	20		ES 5722.../16 x 20		
						25		ES 5722.../16 x 25		
	20	20		20		0.13	20	25	ES 5722.../20 x 20	
								25	ES 5722.../20 x 25	
25	25	25	0.13	25	28			ES 5722.../20 x 28		
					32			ES 5722.../20 x 32		
28	28	28			0.13	32	20	ES 5722.../25 x 20		
							25	ES 5722.../25 x 25		
32	32	32	0.13	32			28	ES 5722.../25 x 28		
							32	ES 5722.../25 x 32		
20	20	20			0.13	40	20	ES 5722.../32 x 20		
							25	ES 5722.../32 x 25		
25	25	25	0.13	40			32	ES 5722.../32 x 32		
							20	ES 5722.../40 x 20		
32	32	32			0.13	40	25	ES 5722.../40 x 25		
							32	ES 5722.../40 x 32		

1) G:  $G=2*r1+\sqrt{(a1-2*r1)^2+(b1-2*r1)^2}$

2) G:  $G=2*a1+\sqrt{3}-2*((r1/\cos30^\circ)-r1)$

3) d1, a1, b1: mögliche Stufung 0,01mm  
possible gradation 0.01mm

4) r1: mögliche Stufung 0,01mm - max. (a1/2)-0.05mm  
possible gradation 0.01mm - max. (a1/2)-0.05mm

5) AT: Verdrehsicherung bei runden Schneidbuchsen (ES 5722) nicht möglich  
Anti-twist protection not possible with round cutting bushes (ES 5722)



BESTELLBEISPIEL  
ORDERING EXAMPLE

Artikel / Item

- ES 5722/13x25 d1=6,05
- ES 5722O/13x25 a1=2,55 b1=6,05 AT=0
- ES 5722R/13x25 a1=2,55 b1=6,05 r1=0,25 AT=90
- ES 5722H/13x25 a1=2,55 r1=0,25
- ES 5722F/13x25 a1=2,55 b1=6,05 r1=0,25 AT=0