

EH 5030 FLEXIBLE ROHRHEIZER

EH 5030 FLEXIBLE TUBULAR HEATER

- » Als Ersatzteil zur Beheizung von Heißkanalverteilern
 - » Beheizung von Werkzeugplatten (Elastomer- oder Duroplastwerkzeuge)
 - » In zahlreichen Längen und Leistungsstärken ab Lager verfügbar
 - » Flexibel in alle Richtungen biegbar
 - » Einfache, direkte Montage des gestreckten Rohrheizkörpers in die Nut mittels Kunststoffhammer
-
- » As a spare part for heating hot runner manifolds
 - » Heating of mould plates (elastomer or thermoset moulds)
 - » Many different lengths and high-performance strengths available from stock
 - » Flexible and bendable in all directions
 - » Simple, direct mounting of the stretched tubular heater into the groove by means of a plastic hammer



meusburger

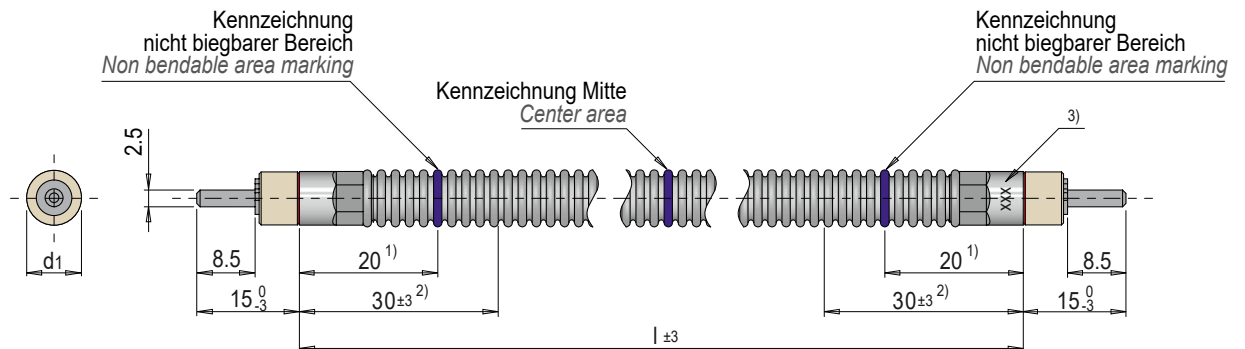
Standards for your success.

EH 5030



Flexibler Rohrheizkörper

Flexible tubular heater



d1	l	Leistung / Output	Nr. / No.
6.5	300	450	EH 5030/6,5 x 300/ 450W
	325	500	EH 5030/6,5 x 325/ 500W
	350	550	EH 5030/6,5 x 350/ 550W
	375	600	EH 5030/6,5 x 375/ 600W
	400	650	EH 5030/6,5 x 400/ 650W
	425	700	EH 5030/6,5 x 425/ 700W
	450	750	EH 5030/6,5 x 450/ 750W
	475	800	EH 5030/6,5 x 475/ 800W
	500	850	EH 5030/6,5 x 500/ 850W
	525	900	EH 5030/6,5 x 525/ 900W
	550	950	EH 5030/6,5 x 550/ 950W
	575	975	EH 5030/6,5 x 575/ 975W
	600	1000	EH 5030/6,5 x 600/1000W
	625	1025	EH 5030/6,5 x 625/1025W
	650	1050	EH 5030/6,5 x 650/1050W
	675	1075	EH 5030/6,5 x 675/1075W
	700	1100	EH 5030/6,5 x 700/1100W
	725	1125	EH 5030/6,5 x 725/1125W
	750	1150	EH 5030/6,5 x 750/1150W
	775	1175	EH 5030/6,5 x 775/1175W
	800	1200	EH 5030/6,5 x 800/1200W
	825	1225	EH 5030/6,5 x 825/1225W
	850	1250	EH 5030/6,5 x 850/1250W
	875	1275	EH 5030/6,5 x 875/1275W
900	1300	EH 5030/6,5 x 900/1300W	
925	1325	EH 5030/6,5 x 925/1325W	
950	1350	EH 5030/6,5 x 950/1350W	
975	1375	EH 5030/6,5 x 975/1375W	
1000	1400	EH 5030/6,5 x1000/1400W	
1025	1425	EH 5030/6,5 x1025/1425W	
1050	1450	EH 5030/6,5 x1050/1450W	
1075	1475	EH 5030/6,5 x1075/1475W	
1100	1500	EH 5030/6,5 x1100/1500W	

d1	l	Leistung / Output	Nr. / No.
8.5	300	650	EH 5030/8,5 x 300/ 650W
	350	750	EH 5030/8,5 x 350/ 750W
	400	900	EH 5030/8,5 x 400/ 900W
	450	900	EH 5030/8,5 x 450/ 900W
		1050	EH 5030/8,5 x 450/1050W
	500	900	EH 5030/8,5 x 500/ 900W
		1150	EH 5030/8,5 x 500/1150W
	550	900	EH 5030/8,5 x 550/ 900W
		1300	EH 5030/8,5 x 550/1300W
	600	900	EH 5030/8,5 x 600/ 900W
		1450	EH 5030/8,5 x 600/1450W
	650	1300	EH 5030/8,5 x 650/1300W
		1600	EH 5030/8,5 x 650/1600W
	700	1450	EH 5030/8,5 x 700/1450W
		1750	EH 5030/8,5 x 700/1750W
	750	1600	EH 5030/8,5 x 750/1600W
		1900	EH 5030/8,5 x 750/1900W
	800	1600	EH 5030/8,5 x 800/1600W
		2050	EH 5030/8,5 x 800/2050W
	850	1600	EH 5030/8,5 x 850/1600W
		2200	EH 5030/8,5 x 850/2200W
	900	1600	EH 5030/8,5 x 900/1600W
		2350	EH 5030/8,5 x 900/2350W
	950	1430	EH 5030/8,5 x 950/1430W
		2500	EH 5030/8,5 x 950/2500W
	1000	1500	EH 5030/8,5 x1000/1500W
		2650	EH 5030/8,5 x1000/2650W
	1050	1590	EH 5030/8,5 x1050/1590W
		2800	EH 5030/8,5 x1050/2800W
	1100	1650	EH 5030/8,5 x1100/1650W
		2950	EH 5030/8,5 x1100/2950W
	1150	1750	EH 5030/8,5 x1150/1750W
		3050	EH 5030/8,5 x1150/3050W
1200	1830	EH 5030/8,5 x1200/1830W	
	3200	EH 5030/8,5 x1200/3200W	
1250	3300	EH 5030/8,5 x1250/3300W	
	3450	EH 5030/8,5 x1300/3450W	

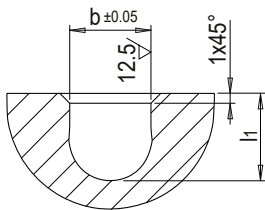
1) Nicht biegsam / *Non bendable*

2) Unbeheizte Länge / *Unheated length*

3) Kennzeichnung: Betriebsspannung 230V / Wattleistung / Länge / Marking: *Operating Voltage 230V / Power W / Length*

Mindestbiegeradius: $\varnothing 6,5 = 10\text{mm}$, $\varnothing 8,5 = 15\text{mm}$ / *Minimum bending radius: $\varnothing 6,5 = 10\text{mm}$, $\varnothing 8,5 = 15\text{mm}$*

EINBAU INSTALLATION



d1	b	l1	Einbau / Installation	Nr. / No.
6.5	6.4	7	Eingepresst mit Kunststoffhammer und Splinttreiber / <i>Pressed in with plastic hammer and pinbunch</i>	EH 5030/6,5 ...
8.5	8.4	9	Mit Abdeckplatte geklemmt / <i>clamped with cover plate</i>	EH 5030/8,5...
		8.4		



Video zum Thema "Flexheizung": <https://youtu.be/NrruT35Hpqk>
 Video on the subject "Flexible Heater": <https://youtu.be/dOj8gbAFxKgk>