

# WINKEL-TEMPERATURSENSOR

## 90° BENT THERMOCOUPLE

Speziell für Heißkanalsysteme bieten wir jetzt den passenden Winkel-Temperatursensor in verschiedenen Größen als Ersatzteil an.

We have added the 90° bent thermocouple to our range as a spare part for hot runner systems.



**meusbürger**

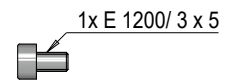
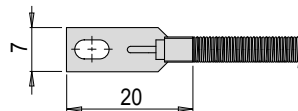
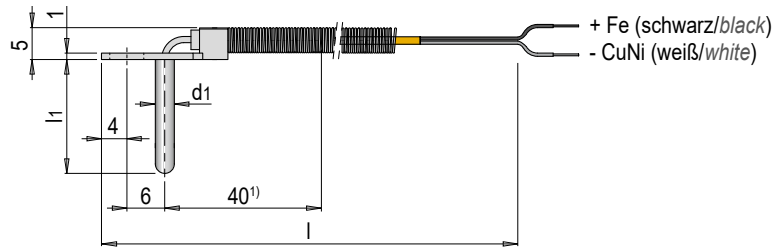
Standards for your success.

EH 5200



## Winkel-Tempersensoren

90° bent thermocouple



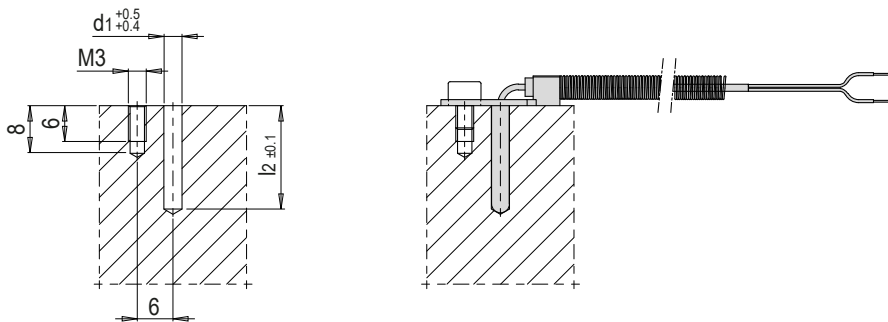
Thermoelement Typ J (Fe-CuNi)  
Thermoelement type J (Fe-CuNi)

l2	d1	l1	l	t max.	Nr. / No.
16.7	3	18	2000	300	EH 5200/3 x 18/2000/300
28.7		30	5000	450	EH 5200/3 x 18/5000/450
					EH 5200/3 x 30/5000/450

1) Nicht biegbare Bereich / 1) Non-bendable area

### EINBAUABMESSUNGEN:

### INSTALLATION DIMENSIONS:



Weitere Ausführung eines Winkel-Tempersensoren siehe E 6702  
See E 6702 for a different version of a 90° bent thermocouple