

SCHNEIDSTEMPEL AUS 1.3344 PM

CUTTING PUNCHES FROM 1.3344 PM

Neu im Sortiment: Schneidstempel aus 1.3344 PM (PM23) mit zylindrischem Kopf nach ISO 8020 und Abdrückstift

New in range: ISO 8020 cutting punches from 1.3344 PM (PM23) with cylindrical head and ejector



meusburger

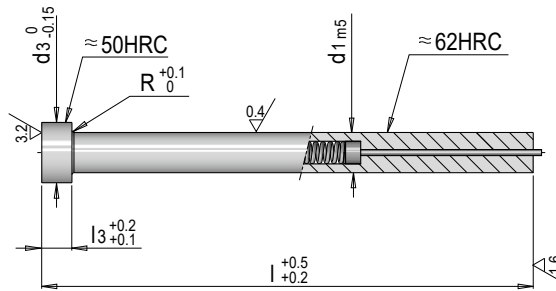
SETTING STANDARDS

E 55602



Schneidstempel mit zylindrischem Kopf, mit Abdrückstift

Cutting punch with cylindrical head, with ejector



Mat.: 1.3344 PM (PM 23)

≈ DIN ISO 8020
Form E

R	l3	d3	d1	l	Nr. / No.		
0.3	5	8	5	63	E 55602/ 5 x 63		
				71	E 55602/ 5 x 71		
				80	E 55602/ 5 x 80		
		9	6	100	E 55602/ 5 x 100		
				63	E 55602/ 6 x 63		
				71	E 55602/ 6 x 71		
		11	8	80	E 55602/ 6 x 80		
				100	E 55602/ 6 x 100		
				63	E 55602/ 8 x 63		
		13	10	71	E 55602/ 8 x 71		
				80	E 55602/ 8 x 80		
				100	E 55602/ 8 x 100		
		0.4	5	13	10	63	E 55602/10 x 63
						71	E 55602/10 x 71
						80	E 55602/10 x 80
16	13			100	E 55602/10 x 100		
				71	E 55602/13 x 71		
				80	E 55602/13 x 80		
19	16	16	100	E 55602/13 x 100			
			80	E 55602/16 x 80			
				100	E 55602/16 x 100		

i Abgesetzte Ausführungen und Beschichtungen über den Konfigurator in den Meusbürger Shops wählbar
Offset versions and coatings selectable via the configurator in the Meusbürger shops

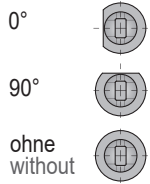
ES 556...2



Schneidstempel abgesetzt, mit zylindrischem Kopf, mit Abdrückstift

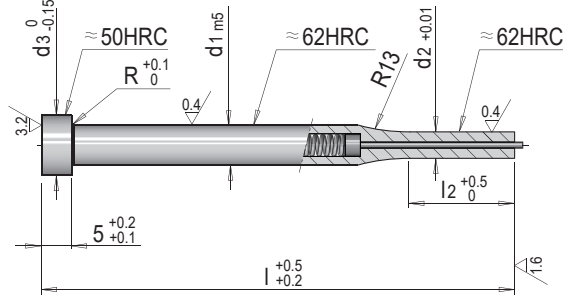
Offset cutting punch with cylindrical head, with ejector

Verdrehsicherung (AT)⁵⁾
anti-twist lock (AT)



Beschichtungen (C)
Coatings (C)

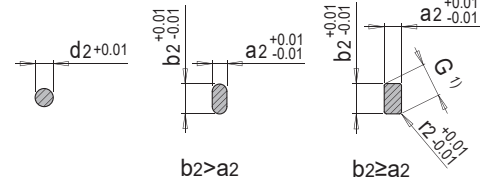
- ohne / without
- TiN
- AlCrN
- DLC



ES 55662

ES 55672

ES 55682



Mat.: 1.3344 PM (PM 23)

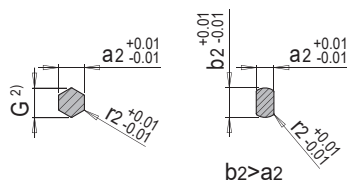
gefertigt aus ISO 8020 Form E
made of ISO 8020 type E

R	d3	d2 min. / a2 min. ³⁾	d2 max. / b2 max. ³⁾ / G max.	r2 min. ⁴⁾	l2 max.	d1	l	Nr. /No.
0.3	8	2	4.95	0.05	d2/a2 < 2.5: 13 d2/a2 ≥ 2.5: 15	5	63	ES 556x2/ 5 x 63
							71	ES 556x2/ 5 x 71
	80	ES 556x2/ 5 x 80						
	100	ES 556x2/ 5 x 100						
0.3	9	2.5	5.95	0.05	d2/a2 < 3: 15 d2/a2 ≥ 3: 17	6	63	ES 556x2/ 6 x 63
							71	ES 556x2/ 6 x 71
	80	ES 556x2/ 6 x 80						
	100	ES 556x2/ 6 x 100						
0.3	11	3.5	7.95	0.05	d2/a2 < 4: 19 d2/a2 ≥ 4: 22	8	63	ES 556x2/ 8 x 63
							71	ES 556x2/ 8 x 71
	80	ES 556x2/ 8 x 80						
	100	ES 556x2/ 8 x 100						
0.3	13	4	9.95	0.05	21 d2/a2 < 5: 22 d2/a2 ≥ 5: 25	10	63	ES 556x2/10 x 63
							71	ES 556x2/10 x 71
	80	ES 556x2/10 x 80						
	100	ES 556x2/10 x 100						
0.4	16	6	12.95	0.05	25 d2/a2 < 8: 25 d2/a2 ≥ 8: 30	13	71	ES 556x2/13 x 71
							80	ES 556x2/13 x 80
	100	ES 556x2/13 x 100						
	16	ES 556x2/16 x 80						
0.4	19	9	15.95	0.05	30	16	80	ES 556x2/16 x 80
							100	ES 556x2/16 x 100

Weitere Formen / further shapes

ES 55692A

ES 55692B



1) G: $G = 2 \cdot r_2 + \sqrt{(a_2 - 2 \cdot r_2)^2 + (b_2 - 2 \cdot r_2)^2}$

2) G: $G = 2 \cdot a_2 + \sqrt{(3) \cdot 2 \cdot ((r_2 / \cos 30^\circ) - r_2)}$

3) d2, a2, b2: mögliche Stufung 0,01mm
possible gradation 0.01mm

4) r2: mögliche Stufung 0,01mm - max. (a2/2)-0.05mm
possible gradation 0.01mm - max. (a2/2)-0.05mm

5) AT: Verdrehsicherung bei rund abgesetzten Schneidstempeln (ES 55662) nicht möglich
anti-twist lock is not possible with round offset cutting punches (ES 55662)



BESTELLBEISPIEL
ORDERING EXAMPLE

Artikel / Item

- ES 55662/6x71 d2=3,05 l2=10 C=AlCrN
- ES 55672/6x71 a2=3,05 b2=5,05 l2=10 AT=0
- ES 55682/6x71 a2=3,05 b2=5,05 r2=0,62 l2=10 AT=90 C=TiN
- ES 55692A/6x71 a2=3,05 r2=0,62 l2=10
- ES 55692B/6x71 a2=3,05 b2=5,05 r2=0,62 l2=10 AT=0