

ERWEITERUNG O-RINGE

EXPANSION OF O-RING SEALS

Wir haben unser O-Ring-Sortiment um zahlreiche neue Größen erweitert.

- » O-Ring E 2130
- » O-Ring Hochtemperatur E 21311

We have added numerous new sizes to our O-ring seal range.

- » O-ring seal E 2130
- » High temperature O-ring seal E 21311



meusburger

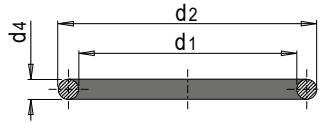
Standards for your success.

E 2130



O-Ring

O-ring seal



t max = 100°C Wasser/water
180°C Öl/oil

Mat.: FKM (Viton), 80 Shore A

d2	d1	d4	Nr. / No.
6	3	1.5	E 2130/ 3 x1,5
7		2	E 2130/ 3 x2
6.8	3.8	1.5	E 2130/ 3,8x1,5
7	4		E 2130/ 4 x1,5
8		2	E 2130/ 4 x2
7.5	4.5	1.5	E 2130/ 4,5x1,5
7.8	4.8		E 2130/ 4,8x1,5
8	5		E 2130/ 5 x1,5
9		2	E 2130/ 5 x2
8.5	5.5	1.5	E 2130/ 5,5x1,5
8.8	5.8		E 2130/ 5,8x1,5
9	6		E 2130/ 6 x1,5
10		2	E 2130/ 6 x2
11		2.5	E 2130/ 6 x2,5
9.5	6.5	1.5	E 2130/ 6,5x1,5
10.5		2	E 2130/ 6,5x2
10	7	1.5	E 2130/ 7 x1,5
11		2	E 2130/ 7 x2
12		2.5	E 2130/ 7 x2,5
10.3	7.1	1.6	E 2130/ 7,1x1,6
10.5	7.5	1.5	E 2130/ 7,5x1,5
11.5		2	E 2130/ 7,5x2
11	8	1.5	E 2130/ 8 x1,5
12		2	E 2130/ 8 x2
13		2.5	E 2130/ 8 x2,5
14		3	E 2130/ 8 x3
11.5	8.5	1.5	E 2130/ 8,5x1,5
12.5		2	E 2130/ 8,5x2
12	9	1.5	E 2130/ 9 x1,5
13		2	E 2130/ 9 x2
14		2.5	E 2130/ 9 x2,5
15		3	E 2130/ 9 x3
12.5	9.5	1.5	E 2130/ 9,5x1,5
13.5		2	E 2130/ 9,5x2
12.8	9.8	1.5	E 2130/ 9,8x1,5
13	10		E 2130/ 10 x1,5
14		2	E 2130/ 10 x2
14.8		2.4	E 2130/ 10 x2,4
15		2.5	E 2130/ 10 x2,5
16		3	E 2130/ 10 x3
13.5	10.5	1.5	E 2130/ 10,5x1,5
14.5		2	E 2130/ 10,5x2
14	11	1.5	E 2130/ 11 x1,5
15		2	E 2130/ 11 x2
16		2.5	E 2130/ 11 x2,5
14.5	11.5	1.5	E 2130/ 11,5x1,5
15.5		2	E 2130/ 11,5x2
16.4	11.6	2.4	E 2130/ 11,6x2,4
16.6	11.8		E 2130/ 11,8x2,4
15	12	1.5	E 2130/ 12 x1,5
16		2	E 2130/ 12 x2
17		2.5	E 2130/ 12 x2,5
18		3	E 2130/ 12 x3
16	12.4	1.8	E 2130/ 12,4x1,8
15.5	12.5	1.5	E 2130/ 12,5x1,5
16.5		2	E 2130/ 12,5x2
17.5		2.5	E 2130/ 12,5x2,5
16	13	1.5	E 2130/ 13 x1,5
17		2	E 2130/ 13 x2
19		3	E 2130/ 13 x3

d2	d1	d4	Nr. / No.
18.1	13.3	2.4	E 2130/ 13,3x2,4
18.7	13.9		E 2130/ 13,9x2,4
17	14	1.5	E 2130/ 14 x1,5
18		2	E 2130/ 14 x2
19		2.5	E 2130/ 14 x2,5
20		3	E 2130/ 14 x3
18	15	1.5	E 2130/ 15 x1,5
18.6		1.8	E 2130/ 15 x1,8
19		2	E 2130/ 15 x2
20		2.5	E 2130/ 15 x2,5
20.1	15.3	2.4	E 2130/ 15,3x2,4
19.5	15.5	2	E 2130/ 15,5x2
19	16	1.5	E 2130/ 16 x1,5
20		2	E 2130/ 16 x2
21		2.5	E 2130/ 16 x2,5
22		3	E 2130/ 16 x3
21.5	16.5	2.5	E 2130/ 16,5x2,5
20	17	1.5	E 2130/ 17 x1,5
21		2	E 2130/ 17 x2
22		2.5	E 2130/ 17 x2,5
22.1	17.3	2.4	E 2130/ 17,3x2,4
22.3	17.5		E 2130/ 17,5x2,4
22.5		2.5	E 2130/ 17,5x2,5
23.5		3	E 2130/ 17,5x3
22	18	2	E 2130/ 18 x2
22.8		2.4	E 2130/ 18 x2,4
23		2.5	E 2130/ 18 x2,5
24		3	E 2130/ 18 x3
22	19	1.5	E 2130/ 19 x1,5
23		2	E 2130/ 19 x2
24		2.5	E 2130/ 19 x2,5
24.1	19.3	2.4	E 2130/ 19,3x2,4
23	20	1.5	E 2130/ 20 x1,5
24		2	E 2130/ 20 x2
25		2.5	E 2130/ 20 x2,5
26		3	E 2130/ 20 x3
25.5	20.3	2.6	E 2130/ 20,3x2,6
25	21	2	E 2130/ 21 x2
26.1	21.3	2.4	E 2130/ 21,3x2,4
25.6	22	1.8	E 2130/ 22 x1,8
26		2	E 2130/ 22 x2
27		2.5	E 2130/ 22 x2,5
28		3	E 2130/ 22 x3
27.1	22.3	2.4	E 2130/ 22,3x2,4
28.1	23.3		E 2130/ 23,3x2,4
27.5	23.5	2	E 2130/ 23,5x2
28	24		E 2130/ 24 x2
29		2.5	E 2130/ 24 x2,5
30		3	E 2130/ 24 x3
28	25	1.5	E 2130/ 25 x1,5
29		2	E 2130/ 25 x2
30		2.5	E 2130/ 25 x2,5
30.1	25.3	2.4	E 2130/ 25,3x2,4
30	26	2	E 2130/ 26 x2
31		2.5	E 2130/ 26 x2,5
32		3	E 2130/ 26 x3
31	27	2	E 2130/ 27 x2
33		3	E 2130/ 27 x3
32.1	27.3	2.4	E 2130/ 27,3x2,4
32	28	2	E 2130/ 28 x2
33		2.5	E 2130/ 28 x2,5
34		3	E 2130/ 28 x3

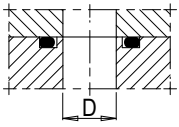
d2	d1	d4	Nr. / No.
33	29	2	E 2130/ 29 x2
34	30		E 2130/ 30 x2
35		2.5	E 2130/ 30 x2,5
36.2	30.2	3	E 2130/ 30,2x3
35.1	30.3	2.4	E 2130/ 30,3x2,4
36	31	2.5	E 2130/ 31 x2,5
36	32	2	E 2130/ 32 x2
37		2.5	E 2130/ 32 x2,5
38.2	32.2	3	E 2130/ 32,2x3
38	34	2	E 2130/ 34 x2
39		2.5	E 2130/ 34 x2,5
40.2	34.2	3	E 2130/ 34,2x3
39	35	2	E 2130/ 35 x2
40		2.5	E 2130/ 35 x2,5
40	36	2	E 2130/ 36 x2
41		2.5	E 2130/ 36 x2,5
42		3	E 2130/ 36 x3
41	37	2	E 2130/ 37 x2
43		3	E 2130/ 37 x3
42	38	2	E 2130/ 38 x2
43		2.5	E 2130/ 38 x2,5
43	39	2	E 2130/ 39 x2
44		2.5	E 2130/ 39 x2,5
45		3	E 2130/ 39 x3
44	40	2	E 2130/ 40 x2
45		2.5	E 2130/ 40 x2,5
46		3	E 2130/ 40 x3
46	42	2	E 2130/ 42 x2
47		2.5	E 2130/ 42 x2,5
48		3	E 2130/ 42 x3
47	43	2	E 2130/ 43 x2
48			
49	44	2.5	E 2130/ 44 x2,5
50		3	E 2130/ 44 x3
50	46	2	E 2130/ 46 x2
51		2.5	E 2130/ 46 x2,5
52		3	E 2130/ 46 x3
52	48	2	E 2130/ 48 x2
53		2.5	E 2130/ 48 x2,5
54	49		E 2130/ 49 x2,5
55		3	E 2130/ 49 x3
54	50	2	E 2130/ 50 x2
55		2.5	E 2130/ 50 x2,5
56		3	E 2130/ 50 x3

d2	d1	d4	Nr. / No.
56	52	2	E 2130/ 52 x2
58			
60	54	3	E 2130/ 54 x3
59			2
62	56	3	E 2130/ 56 x3
64			58
65	59		E 2130/ 59 x3
66	60		E 2130/ 60 x3
68	62		E 2130/ 62 x3
69	63		E 2130/ 63 x3
72	66		E 2130/ 66 x3
76	70		E 2130/ 70 x3
79	73		E 2130/ 73 x3
84	78		E 2130/ 78 x3
86	80		E 2130/ 80 x3
89	83		E 2130/ 83 x3
90	84		E 2130/ 84 x3
92	86		E 2130/ 86 x3
96	90		E 2130/ 90 x3
99	93		E 2130/ 93 x3
106	100		E 2130/100 x3
109	103		E 2130/103 x3
118	110	4	E 2130/110 x4
118	112	3	E 2130/112 x3
128	120	4	E 2130/120 x4
128	122	3	E 2130/122 x3
138	130	4	E 2130/130 x4
138	132	3	E 2130/132 x3
148	140	4	E 2130/140 x4
150	142		E 2130/142 x4
158	150		E 2130/150 x4
168	160		E 2130/160 x4
178	170		E 2130/170 x4
188	180		E 2130/180 x4
198	190		E 2130/190 x4
206	200	3	E 2130/200 x3
208			4
228	220		E 2130/220 x4
248	240		E 2130/240 x4
268	260		E 2130/260 x4
288	280		E 2130/280 x4
308	300		E 2130/300 x4

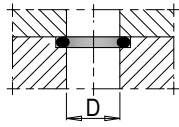
EINBAU

INSTALLATION

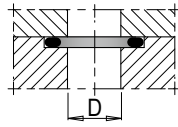
axial



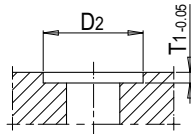
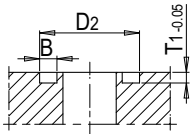
Ringnut
optimal, lange Lebensdauer
Ring groove
optimal solution, long life



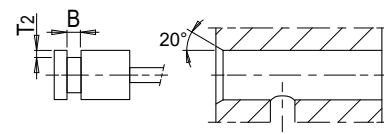
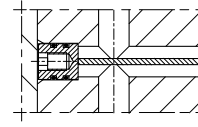
$d_1 = D$
platzsparend
 $d_1 = D$
space-saving



$d_1 > D$
mehr Sicherheit
 $d_1 > D$
more safety



radial



Tipp: D_2 kann bis zu max. 3% kleiner als d_2 sein, damit der O-Ring in der Platte fixiert ist und hält.
Tip: D_2 can be max. 3% smaller than d_2 so that the O-ring seal is securely fixed in the plate.



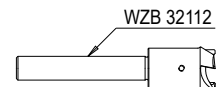
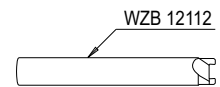
d4	B	T1	T2
1.5	1.9	1.2	1.3
1.6	2.2	1.25	1.4
1.8	2.6	1.4	1.5
2	2.6	1.6	1.7
2.4	3.1	1.9	2.1
2.5	3.2	2.0	2.2
2.6	3.6	2.1	2.2
3	3.9	2.4	2.6
4	5.2	3.2	3.5



O-RINGNUT MIT EINEM O-RINGSENKER VON MEUSBURGER

O-ring groove made with a Meusburger countersink for O-rings

Unser O-Ringsenker macht **konzentrische Riefen**, dadurch ist eine **optimale Abdichtung** möglich.
Our countersink for O-rings makes **concentric grooves**, thus enabling **optimal sealing**.

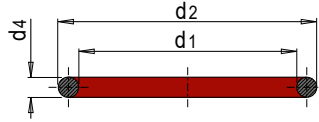


E 21311



O-Ring Hochtemperatur

High temperature O-ring seal



Mat.: FKM plus, 75 Shore A

rot beschichtet
with red coating

t max = 180°C (peak 200°C) Wasser/water
180°C (peak 200°C) Öl/oil

d2	d1	d4	Nr. / No.
6	3	1.5	E 21311/ 3 x1,5
6.8	3.8	1.5	E 21311/ 3,8x1,5
7	4	1.5	E 21311/ 4 x1,5
7.8	4.8	1.5	E 21311/ 4,8x1,5
8	5	1.5	E 21311/ 5 x1,5
9		2	E 21311/ 5 x2
8.5	5.5	1.5	E 21311/ 5,5x1,5
8.8	5.8	1.5	E 21311/ 5,8x1,5
9	6	1.5	E 21311/ 6 x1,5
10		2	E 21311/ 6 x2
11		2.5	E 21311/ 6 x2,5
9.5	6.5	1.5	E 21311/ 6,5x1,5
10.5		2	E 21311/ 6,5x2
10	7	1.5	E 21311/ 7 x1,5
11		2	E 21311/ 7 x2
12		2.5	E 21311/ 7 x2,5
10.5	7.5	1.5	E 21311/ 7,5x1,5
11.5		2	E 21311/ 7,5x2
11	8	1.5	E 21311/ 8 x1,5
12		2	E 21311/ 8 x2
13		2.5	E 21311/ 8 x2,5
14		3	E 21311/ 8 x3
11.5	8.5	1.5	E 21311/ 8,5x1,5
12.5		2	E 21311/ 8,5x2
11	9	1	E 21311/ 9 x1
12		1.5	E 21311/ 9 x1,5
13		2	E 21311/ 9 x2
14		2.5	E 21311/ 9 x2,5
15		3	E 21311/ 9 x3
12.5	9.5	1.5	E 21311/ 9,5x1,5
13.5		2	E 21311/ 9,5x2
12.8	9.8	1.5	E 21311/ 9,8x1,5
13	10	1.5	E 21311/ 10 x1,5
14		2	E 21311/ 10 x2
14.8		2.4	E 21311/ 10 x2,4
15		2.5	E 21311/ 10 x2,5
16		3	E 21311/ 10 x3
13.5	10.5	1.5	E 21311/ 10,5x1,5
14.5		2	E 21311/ 10,5x2
14	11	1.5	E 21311/ 11 x1,5
15		2	E 21311/ 11 x2
16		2.5	E 21311/ 11 x2,5
16.6	11.8	2.4	E 21311/ 11,8x2,4
15	12	1.5	E 21311/ 12 x1,5
16		2	E 21311/ 12 x2
17		2.5	E 21311/ 12 x2,5
18		3	E 21311/ 12 x3
16	12.4	1.8	E 21311/ 12,4x1,8
14.5	12.5	1	E 21311/ 12,5x1
16.5		2	E 21311/ 12,5x2
16	13	1.5	E 21311/ 13 x1,5
17		2	E 21311/ 13 x2
18.1	13.3	2.4	E 21311/ 13,3x2,4
18.7	13.9	2.4	E 21311/ 13,9x2,4
17	14	1.5	E 21311/ 14 x1,5
18		2	E 21311/ 14 x2
19		2.5	E 21311/ 14 x2,5
20		3	E 21311/ 14 x3

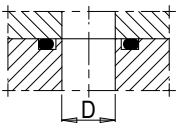
d2	d1	d4	Nr. / No.
18	15	1.5	E 21311/ 15 x1,5
18.6		1.8	E 21311/ 15 x1,8
19		2	E 21311/ 15 x2
20		2.5	E 21311/ 15 x2,5
20.1	15.3	2.4	E 21311/ 15,3x2,4
19.5	15.5	2	E 21311/ 15,5x2
20	16	2	E 21311/ 16 x2
21		2.5	E 21311/ 16 x2,5
22		3	E 21311/ 16 x3
20	17	1.5	E 21311/ 17 x1,5
21		2	E 21311/ 17 x2
22		2.5	E 21311/ 17 x2,5
22.3	17.5	2.4	E 21311/ 17,5x2,4
22	18	2	E 21311/ 18 x2
22.8		2.4	E 21311/ 18 x2,4
23		2.5	E 21311/ 18 x2,5
24		3	E 21311/ 18 x3
23	19	2	E 21311/ 19 x2
24.1	19.3	2.4	E 21311/ 19,3x2,4
23	20	1.5	E 21311/ 20 x1,5
24		2	E 21311/ 20 x2
25		2.5	E 21311/ 20 x2,5
26		3	E 21311/ 20 x3
25	21	2	E 21311/ 21 x2
26.1	21.3	2.4	E 21311/ 21,3x2,4
26	22	2	E 21311/ 22 x2
27		2.5	E 21311/ 22 x2,5
28		3	E 21311/ 22 x3
28.1	23.3	2.4	E 21311/ 23,3x2,4
27.5	23.5	2	E 21311/ 23,5x2
28	24	2	E 21311/ 24 x2
29		2.5	E 21311/ 24 x2,5
30		3	E 21311/ 24 x3
28	25	1.5	E 21311/ 25 x1,5
29		2	E 21311/ 25 x2
30		2.5	E 21311/ 25 x2,5
30.1	25.3	2.4	E 21311/ 25,3x2,4
30	26	2	E 21311/ 26 x2
31		2.5	E 21311/ 26 x2,5
32		3	E 21311/ 26 x3
31	27	2	E 21311/ 27 x2
32.1	27.3	2.4	E 21311/ 27,3x2,4
32	28	2	E 21311/ 28 x2
33		2.5	E 21311/ 28 x2,5
34		3	E 21311/ 28 x3
33	29	2	E 21311/ 29 x2
34	30	2	E 21311/ 30 x2
35		2.5	E 21311/ 30 x2,5
36.2	30.2	3	E 21311/ 30,2x3
36	32	2	E 21311/ 32 x2
37		2.5	E 21311/ 32 x2,5
38.2	32.2	3	E 21311/ 32,2x3
38	34	2	E 21311/ 34 x2
39		2.5	E 21311/ 34 x2,5
40.2	34.2	3	E 21311/ 34,2x3
39	35	2	E 21311/ 35 x2

d2	d1	d4	Nr. / No.
40	36	2	E 21311/ 36 x2
41		2.5	E 21311/ 36 x2,5
42		3	E 21311/ 36 x3
41	37	2	E 21311/ 37 x2
43		3	E 21311/ 37 x3
43		2.5	E 21311/ 38 x2,5
45	39	3	E 21311/ 39 x3
44	40	2	E 21311/ 40 x2
45		2.5	E 21311/ 40 x2,5
46	42	2	E 21311/ 42 x2
47		2.5	E 21311/ 42 x2,5
48		3	E 21311/ 42 x3
48	44	2	E 21311/ 44 x2
49		2.5	E 21311/ 44 x2,5
50	46	3	E 21311/ 44 x3
50		2	E 21311/ 46 x2
51		2.5	E 21311/ 46 x2,5
52		3	E 21311/ 46 x3

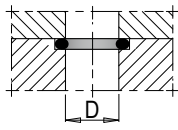
d2	d1	d4	Nr. / No.
53	48	2.5	E 21311/ 48 x2,5
55		3	E 21311/ 49 x3
54	50	2	E 21311/ 50 x2
55		2.5	E 21311/ 50 x2,5
58	52	3	E 21311/ 52 x3
60		54	E 21311/ 54 x3
59	55	2	E 21311/ 55 x2
62		56	E 21311/ 56 x3
64	58	3	E 21311/ 58 x3
66		60	E 21311/ 60 x3
68	62	3	E 21311/ 62 x3
72		66	E 21311/ 66 x3
76	70	3	E 21311/ 70 x3
79		73	E 21311/ 73 x3
86	80	3	E 21311/ 80 x3

EINBAU INSTALLATION

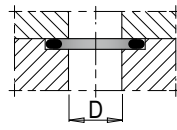
axial



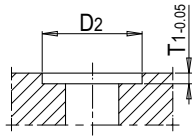
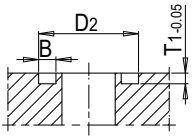
Ringnut optimal, lange Lebensdauer
Ring groove optimal solution, long life



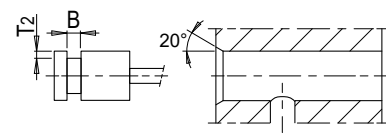
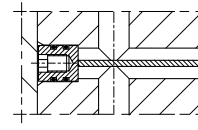
d1 = D platzsparend
d1 = D space-saving



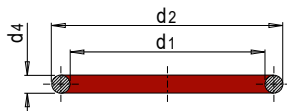
d1 > D mehr Sicherheit
d1 > D more safety



radial



Tipp: D2 kann bis zu max. 3% kleiner als d2 sein, damit der O-Ring in der Platte fixiert ist und hält.
Tip: D2 can be max. 3% smaller than d2 so that the O-ring seal is securely fixed in the plate.



d4	B	T1	T2
1	1.4	0.7	0.7
1.5	1.9	1.2	1.3
1.8	2.6	1.4	1.5
2	2.6	1.6	1.7
2.4	3.1	1.9	2.1
2.5	3.2	2.0	2.2
3	3.9	2.4	2.6



O-RINGNUT MIT EINEM O-RINGSENKER VON MEUSBURGER O-ring groove made with a Meusburger countersink for O-rings

Unser O-Ringsenker macht **konzentrische Riefen**, dadurch ist eine **optimale Abdichtung** möglich.
Our countersink for O-rings makes **concentric grooves**, thus enabling **optimal sealing**.

