

# ERWEITERUNG ANSCHLUSSNIPPEL

## FITTING EXPANSION

Der Anschlussnippel verschließend mit Dichtmittel und dem Durchmesser 13 mm wird um die Gewindeausführung G 1/4" ergänzt.

The shut-off fitting with sealant and a diameter of 13 mm now also comes with a G 1/4" thread.



**meusburger**



Standards for your success.

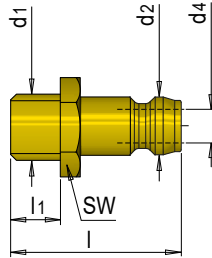
E 2020..



## Anschlussnippel verschließend

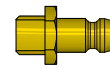
Shut-off fitting

-  Oil 200°C
-  Water 150°C
- PN** 15 bar

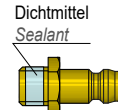


Messing (Zollgewinde vernickelt)  
Brass (Imperial threads are nickel-plated)

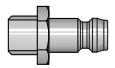
Edelstahl  
Stainless steel



E 2020



E 2020 D



E 20209

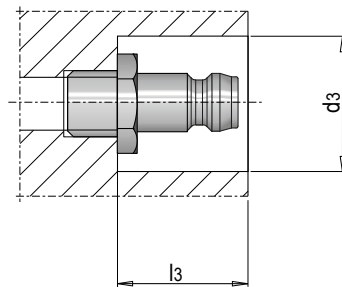
Mat.: 2.0401 (CuZn)

Mat.: 1.4305



SW	l	l1	d4 <sup>1)</sup>	d2	d1	Nr. / No.	Nr. / No.	Nr. / No.
15	29	12	6	9	M14 x 1,5	E 2020/ 9/ 14	E 2020 D/ 9/ 14	E 20209/ 9/ 14
					G 1/4"	E 2020/ 9/1/4	E 2020 D/ 9/1/4	E 20209/ 9/1/4
					G 3/8"	E 2020/ 9/3/8	E 2020 D/ 9/3/8	E 20209/ 9/3/8
17	30	12	9	13	M16 x 1,5	E 2020/13/ 16	E 2020 D/13/ 16	E 20209/13/ 16
15		11	6		G 1/4"		E 2020 D/13/1/4	
17		12	9		G 3/8"	E 2020/13/3/8	E 2020 D/13/3/8	E 20209/13/3/8
22	31			19	G 1/2"	E 2020/13/1/2	E 2020 D/13/1/2	E 20209/13/1/2
27	51	16	13		M24 x 1,5	E 2020/19/ 24		
22	47	12			G 1/2"	E 2020/19/1/2	E 2020 D/19/1/2	
27	51	16			G 3/4"	E 2020/19/3/4		

1) d4: E 2020D/13/1/4: kleineres Ventil von Größe d2 = 9 / d4: E 2020D/13/1/4: smaller valve from d2 = 9



d2	d1	l3	d3
9	M14 x 1,5	18	22
	G 1/4"		
	G 3/8"		
13	M16 x 1,5	19	26
	G 1/4"		
	G 3/8"		
	G 1/2"		
19	M24 x 1,5	36	38
	G 1/2"		
	G 3/4"		