

E 3380 KOMPAKTSCHIEBEREINHEIT GEKÜHLT

E 3380 COOLED COMPACT SLIDE UNIT

Neu in unserem Sortiment ist der einzige gekühlte Kompaktschieber auf dem Markt mit langem Hub und extrem kompakter Bauweise.

- » Gehärteter und DLCbeschichteter Schieber
- » Einfache Geometrien ermöglichen maximale Flexibilität beim Einbau
- » Schließkeil mit einer Hublänge bis 40 mm
- » Abstimmbarer Schieberweg
- » Temperieranschlüsse: vorgefertigte Kühlbohrung mit integrierter Kühldüse

New in our range is the only cooled compact slide on the market with long stroke and extremely compact design.

- » Hardened and DLC coated slide
- » Simple geometries allow maximum flexibility for installation
- » Cotter with a stroke length up to 40 mm
- » Adjustable slide stroke
- » Cooling connectors: Prefabricated cooling hole with integrated fountain



meusburger

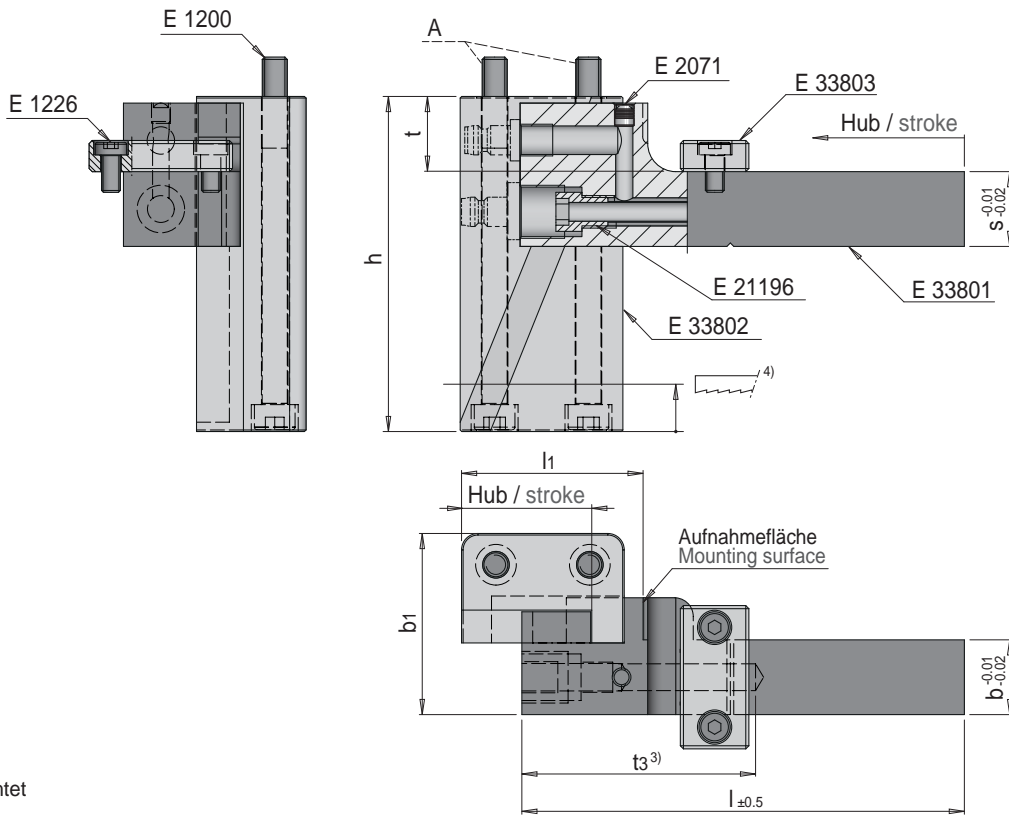
Standards for your success.

E 3380



Kompaktschiebereinheit gekühlt

Cooled compact slide unit



DLC beschichtet
coated

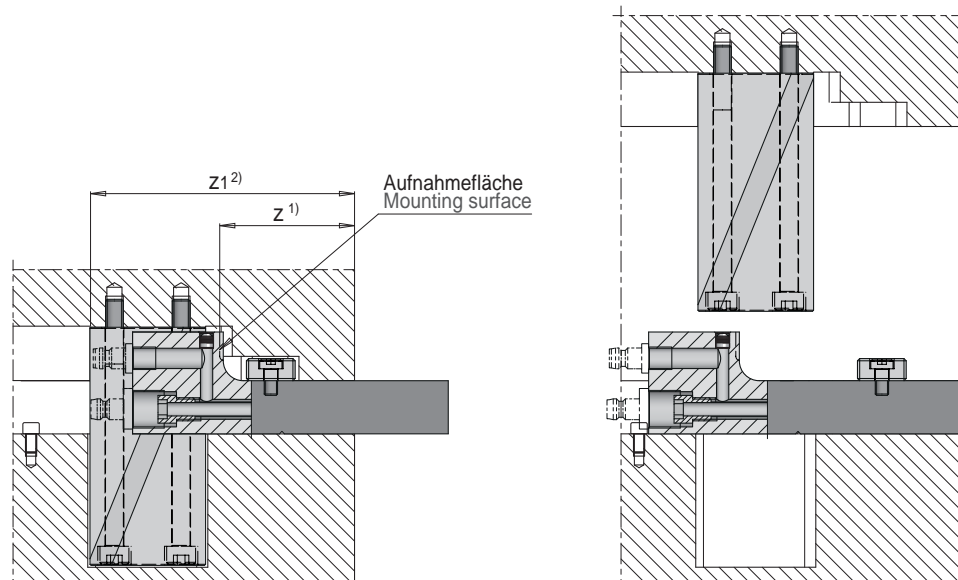
z ¹⁾	z ¹²⁾	A	l	h	b1	l1	t	t3 ³⁾	b	s	Hub / Stroke	Nr. / No.
35	73	1	135	57	51.5	38.06	26	70	18	18	20	E 3380/18x18/20
55	113	2		106	53.5	58.06					40	E 3380/18x18/40
40	79	1	142	57	56.5	39.05	23	75	24	24	20	E 3380/24x24/20
60	119	2		106	58.5	59.05					40	E 3380/24x24/40
41	80	1	145	57	60.5	39.05	20	80	30	30	20	E 3380/30x30/20
61	120	2		106	62.5	59.05					40	E 3380/30x30/40

1) z: Mindestmaß zur Formgebung, ausgehend von der Schieberaufnahmefläche / z: Minimum dimension for design, starting from the slide receiving surface

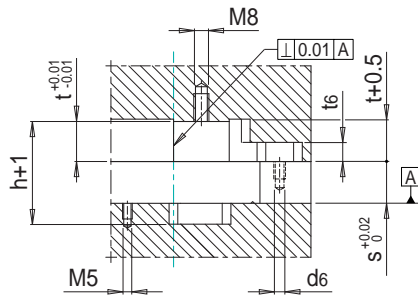
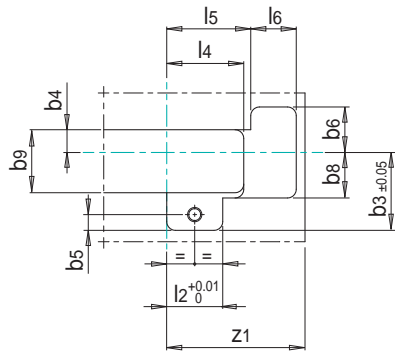
2) z1: Mindestmaß zur Formgebung, ausgehend von der Verriegelung / z1: Minimum dimension for design, starting from the lock

3) t3: Bei Bedarf Kühlbohrung in der Tiefe anpassen / t3: Increase cooling hole depth if necessary

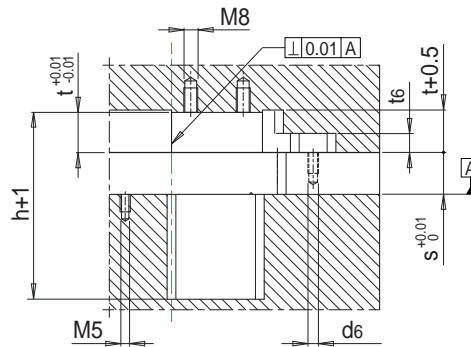
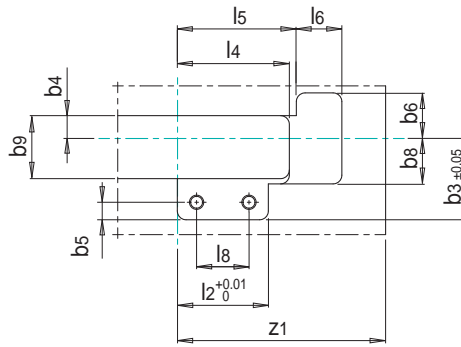
4) Für kleineren Hub Schließkeil kürzen / To reduce stroke shorten cotter



Keil / Verriegelung: Hub 20
Wedge / Locking: Stroke 20

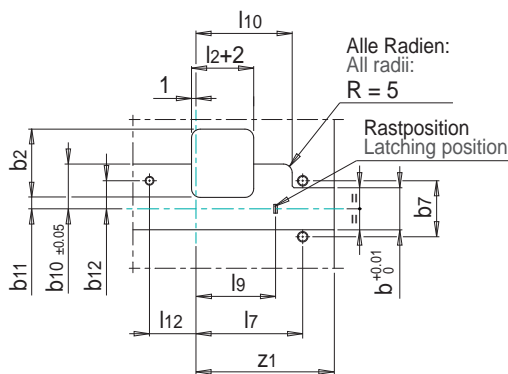


Keil / Verriegelung: Hub 40
Wedge / Locking: Stroke 40

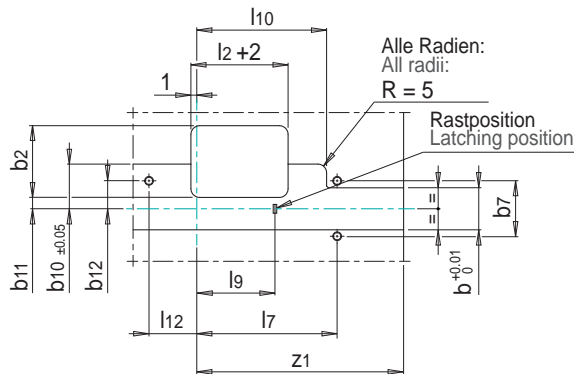


s	b	Hub / Stroke	h	l2	l4	l5	l6	l8	z1	b3	b4	b5	b6	b8	b9	t	t6	d6
18	18	20	57	32	43	43	26	-	73	42.5	10	9	23	24	31	26	11	M6
		40	106	52	63	63		30	113	44.5	10	10						
24	24	20	57	32	44	48	30	-	79	-	13	9	26	26	36	23	-	M8
		40	106	52	64	68		30	119	46.5	10	10						
30	30	20	57	32	52	47	30	-	80	45.5	16	9	31.5	27.5	39	20	14	M8
		40	106	52	70	68		30	120	47.5	10	10						

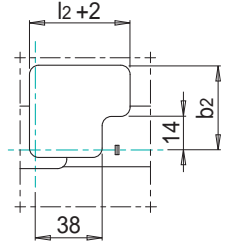
Schieberführung: Hub 20
Slide guide: Stroke 20



Schieberführung: Hub 40
Slide guide: Stroke 40



E 3380/18x18x40



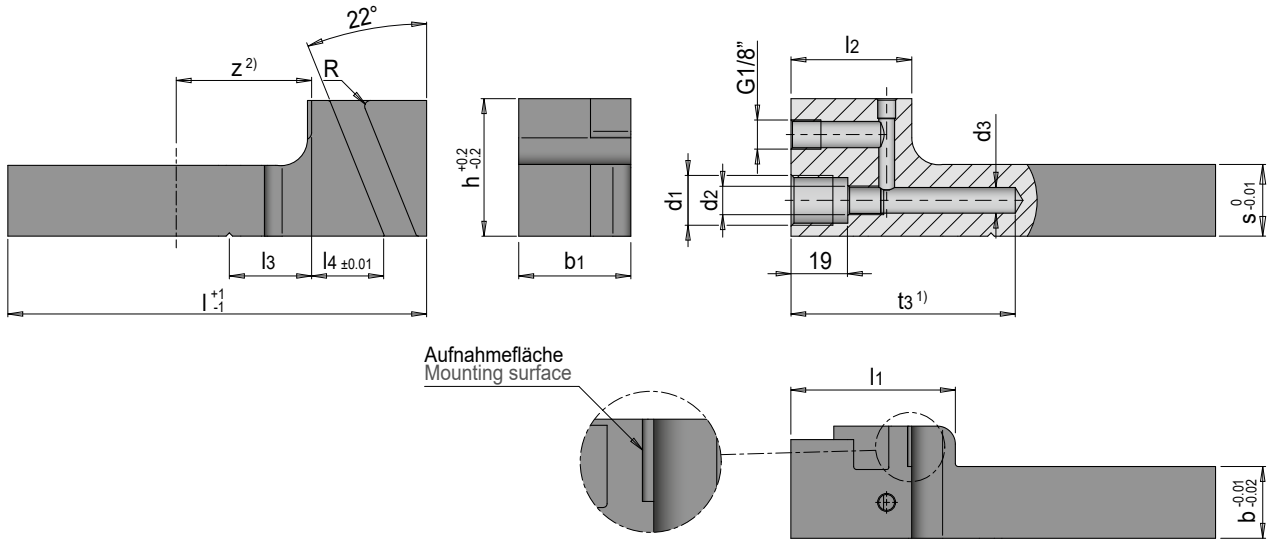
s	b	Hub / Stroke	l2	l7	l9	l10	l12	z1	b2	b7	b10	b11	b12
18	18	20	32	56	46	49	25.5	73	39	26	23.55	4	16
		40	52	76	69	69	113	41					
24	24	20	32	61	44.3	55	26.5	79	39	32	25.55	6.5	-
		40	52	81	75	75	119	41					
30	30	20	32	62	54.3	56	26	80	39	42	26.55	7.5	15
		40	52	83	76	76	120	41					

E 33801



Schieber gekühlt

Cooled slide



Aufnahmefläche
Mounting surface

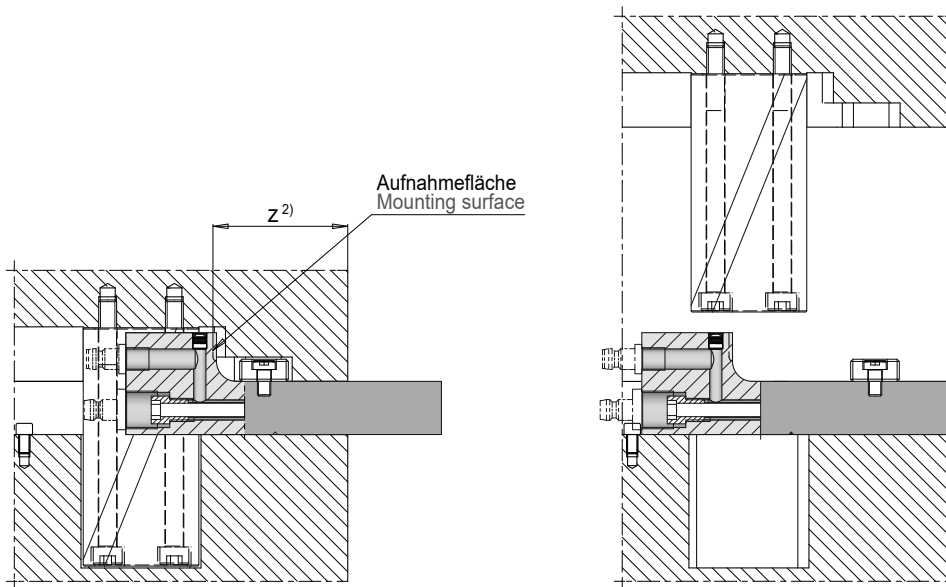
Mat.: 1.2343 ESU \approx 52 HRC

DLC beschichtet
coated

d1	d2	d3	b1	R	h	l	l1	l2	l3	l4	t3 ⁽¹⁾	z ⁽²⁾	b	s	Nr. / No.
G1/4"	M8	7.1	32.5	1	43	135	48	38	29.3	23.43	70	35	18	18	E 33801/18x18
G3/8"	M10	8.6	37.5	2	46	142	55	40.4	27	25.63	75	40	24	24	E 33801/24x24
	M12	10.2	41.5	2.5	49	145	55.5	40	35.8	26.85	80	41	30	30	E 33801/30x30

1) t3: Bei Bedarf Kühlbohrung in der Tiefe anpassen / t3: Increase cooling hole depth if necessary

2) z: Mindestmaß zur Formgebung, ausgehend von der Schieberaufnahmefläche / z: Minimum dimension for design, starting from the slide receiving surface



E 33802

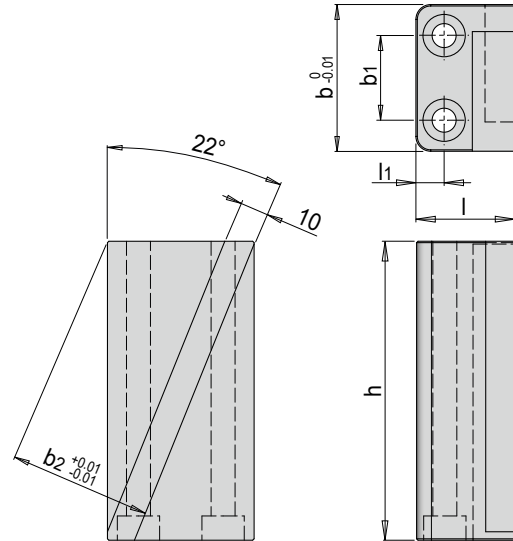
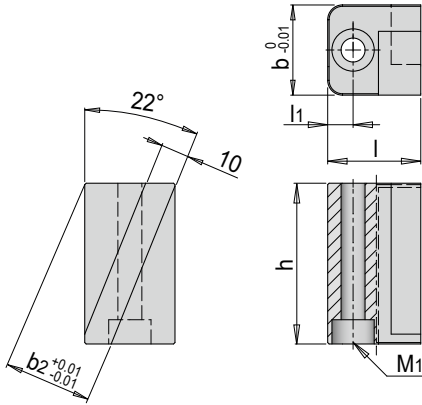


Schließkeil

Cotter

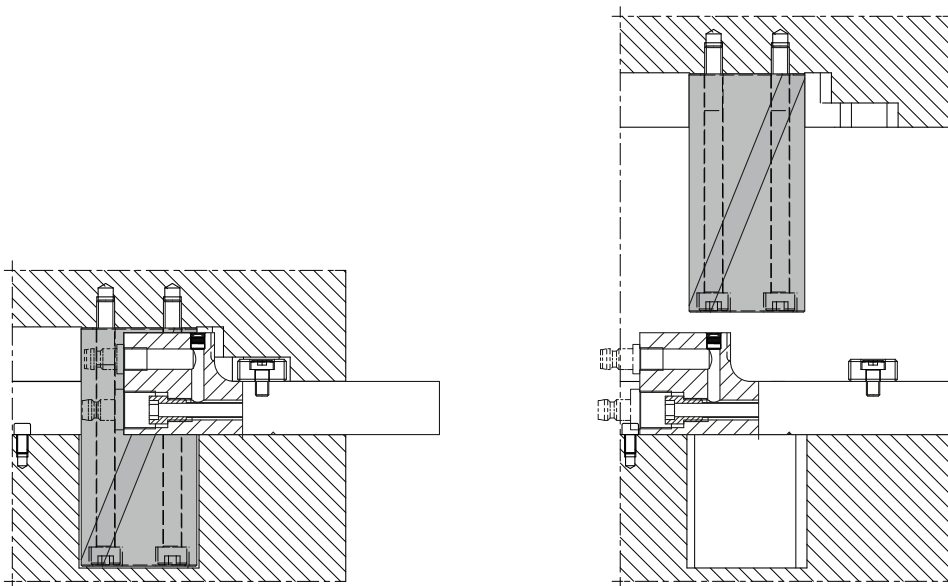
Hub / Stroke 20

Hub / Stroke 40



Mat.: 1.2842 ≈ 60 HRC

b	b1	b2	h	l	l1	M1	Hub / Stroke	Nr. / No.
32	-	30.04	57	33	9	M8	20	E 33802 / 20
52	30	48.59	106	35	10		40	E 33802 / 40

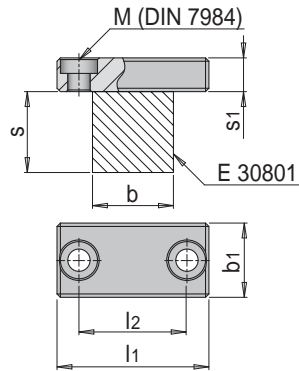


E 33803



Führungsleiste

Guiding rail



Mat.: 1.2842 ≈ 60 HRC

b1	l1	l2	M	s1	b	s	Nr. / No.
22	40	26	M6	10	18	18	E 33803/ 18x18
	46	32			24	24	E 33803/ 24x24
26	60	42	M8	12	30	30	E 33803/ 30x30

