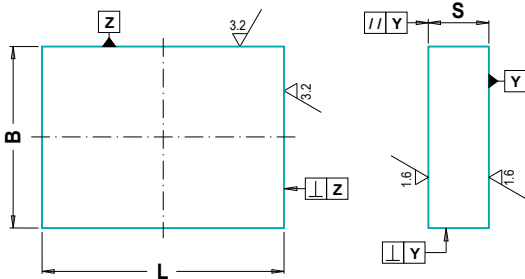


## TOLERANZEN P/PL

## TOLERANCES P/PL

### P-NORMPLATTE

#### P-STANDARD PLATE

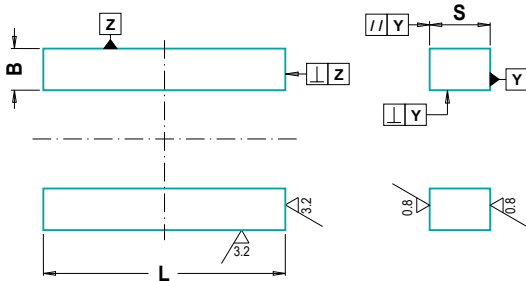


		P..	B / L	P..
$\parallel$ Y	0,006 / 100	≤ 496		+0,10 0
$\perp$ Y	0,04 / 100	≤ 996		+0,20 0
$\perp$ Z	0,04 / 100	> 996		+0,30 0
S	Mat.	B / L	P..	
	1730 2085 2311 2312 2714HH 2738 2738TSHH 3.4365	≤ 496	+0,25 +0,20	
		≤ 1196	+0,35 +0,30	
	2083 2162 2343 2343ESU	≤ 246	+0,45 +0,40	
	2379 2767	≤ 346	+0,55 +0,50	
		≤ 1196	+0,65 +0,60	

Standardisierte Maße für bearbeitete Platten ~ DIN 16760 / Standardized dimensions for machined plates

### PL-NORMLEISTE

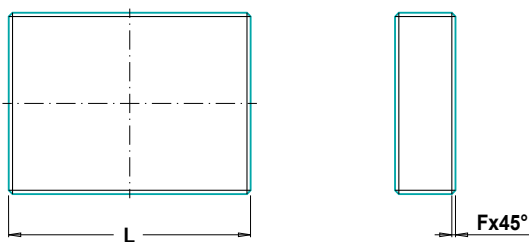
#### PL-STANDARD RISER



		P..	B / L	P..
$\parallel$ Y	0,006 / 300	≤ 496		+0,10 0
$\perp$ Y	0,04 / 100	≤ 996		+0,20 0
$\perp$ Z	0,04 / 100	> 996		+0,30 0
S			+0,02 0	

### FACETTEN P/PL

#### CHAMFER P/PL



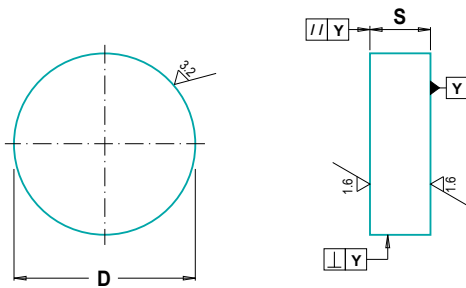
F	Mat.	L	P..
	1730 2085 2311 2312 2714HH 2738 2738TSHH 3.4365	≤ 126 = 0.8	+0,20 0
		≤ 396 = 1.0	
		≤ 596 = 1.4	
		> 596 = 1.8	
	2083 2162 2343 2343ESU 2379 2767	≤ 126 = 0.9	
		≤ 246 = 1.1	
		≤ 396 = 1.2	
≤ 596 = 1.6			
	> 596 = 2.0		

## TOLERANZEN PR

### TOLERANCES PR

#### PR-RUNDPLATTE

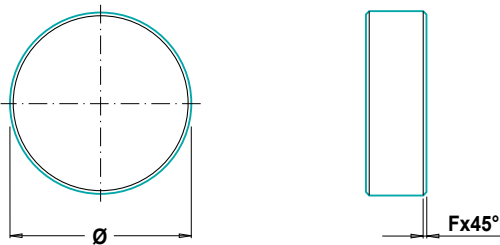
##### PR-ROUND PLATE



	PR ..	Ø	PR ..
D	$\parallel \text{Y}$	≤ 500	+0,10 0
	$\perp \text{Y}$	≤ 1000	+0,20 0
		> 1000	+0,30 0
S		≤ 500	+0,25 +0,20
		≤ 1200	+0,35 +0,30

#### FACETTEN PR

##### CHAMFER PR



	Mat.	ø	PR ..
F	1730 2085	≤ 120 = 0.8	+0,20 0
	2311 2312	≤ 400 = 1.0	
	2316 2714HH	≤ 600 = 1.4	
		> 600 = 1.8	