

KUPPLUNGEN FÜR HYDRAULIK

HYDRAULIC COUPLERS

- » Tropffreies und sauberes Entkuppeln dank Flat-Face
- » Hochwertige Industriequalität mit gehärtetem Stecknippel nach ISO 16028
- » Dank FKM-Dichtungen Einsatztemperaturen bis zu 200 °C möglich

- » Clean, drip-free decoupling thanks to flat face
- » High industrial quality with hardened coupling according to ISO 16028
- » Usable at temperatures of up to 200 °C due to FKM seals



meusburger

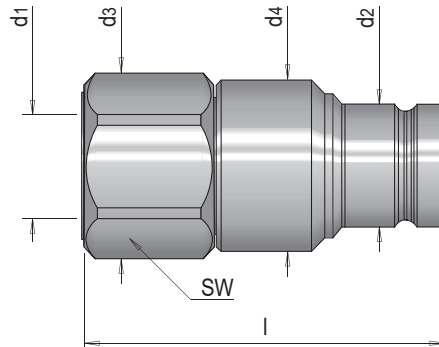
Standards for your success.

E 72020



Hydraulikstecknippel, ISO 16028

Hydraulic nipple, ISO 16028

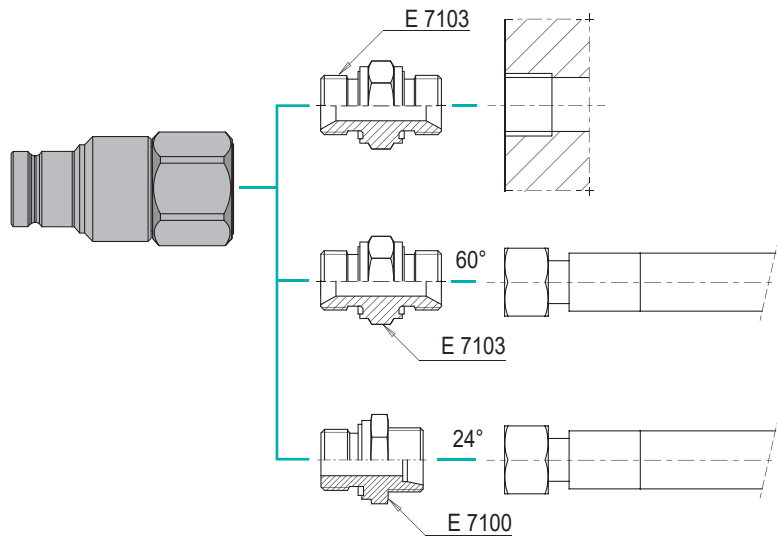


Mat.: Stahl gehärtet, zinkpassiviert, FKM
zinc passivated hardened steel, FKM

t_{max} = 200°C

| p max. | SW | l | d2 | d3 | d4 | DN | d1 | Nr. / No. |
|---------|----|------|------|------|------|----|--------|-----------------|
| 500 bar | 21 | 48.7 | 16.2 | 23.8 | 25.2 | 6 | G 1/4" | E 72020/ 6/ 1/4 |
| 400 bar | 25 | 55.2 | 19.8 | 28 | 27.8 | 10 | G 3/8" | E 72020/10/ 3/8 |
| | 27 | 58.6 | | 30.2 | | | | E 72020/10/ 1/2 |
| | 32 | 71.7 | 24.5 | 35 | 35 | | 12 | G 1/2" |

1) DN: Nennweite / nominal diameter

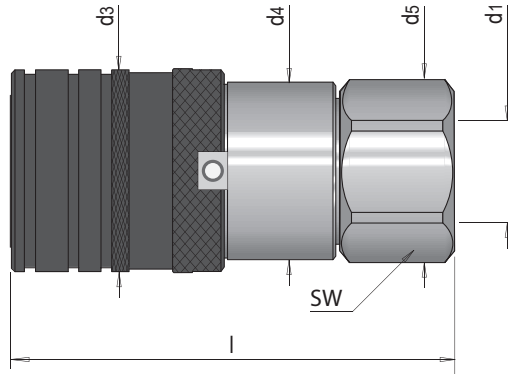


E 72030



Hydraulikkupplung, ISO 16028

Hydraulic coupling, ISO 16028

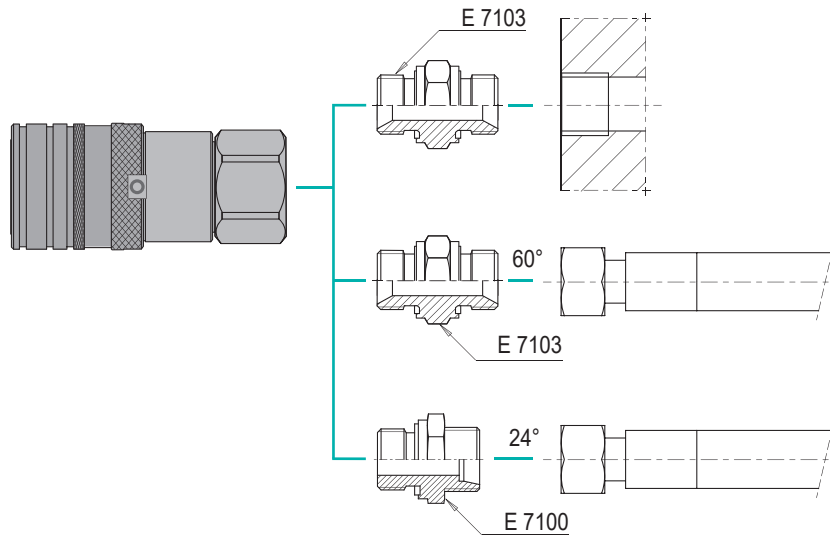


Mat.: Stahl, zinkpassiviert, FKM
zinc passivated steel, FKM

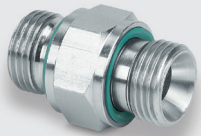
t_{max} = 200°C

| p max. | SW | l | d3 | d4 | d5 | DN | d1 | Nr. / No. |
|---------|----|------|----|----|------|----|-----------------|-----------------|
| 500 bar | 21 | 58.2 | 27 | 24 | 23.8 | 6 | G 1/4" | E 72030/ 6/ 1/4 |
| 400 bar | 25 | 67.7 | 31 | 27 | 28 | 10 | G 3/8" | E 72030/10/ 3/8 |
| | 27 | 71 | | | | | | 30.2 |
| | 32 | 75 | 38 | 35 | 35 | 12 | E 72030/12/ 1/2 | |

1) DN: Nennweite / nominal diameter

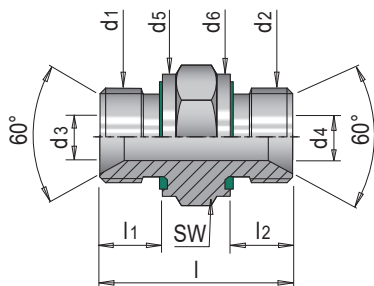


E 7103



Hydraulikadapter, mit Dichtring beidseitig

Hydraulic adapter, with sealing ring on both sides

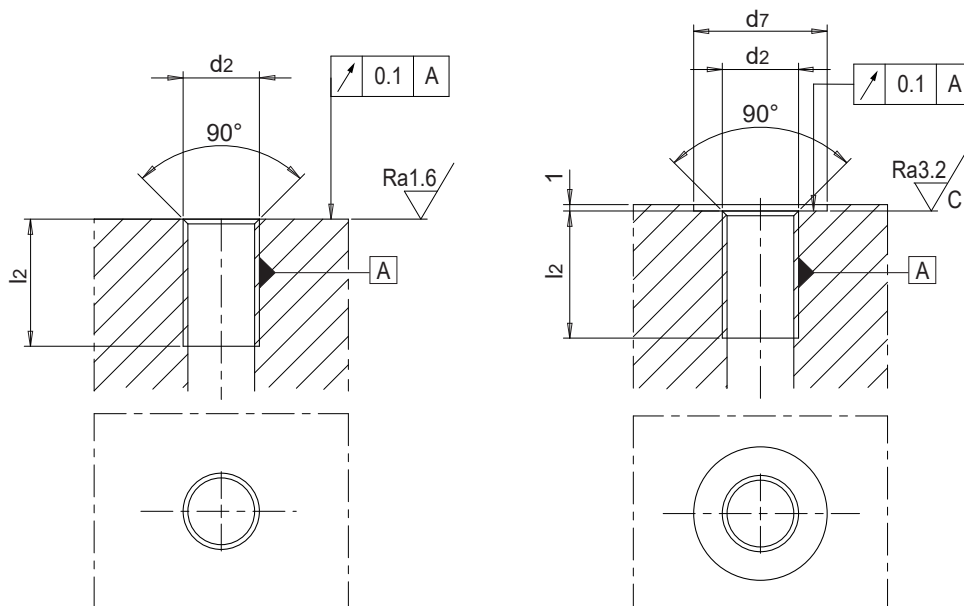
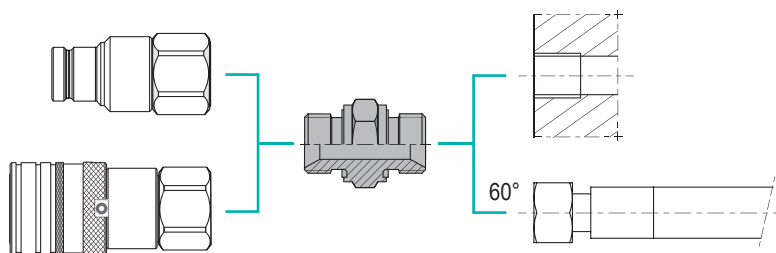


Mat.: Stahl verzinkt, FKM
galvanized steel, FKM

t max = 200°C

| p max. | SW | l | l1 | l2 | d3 | d4 | d5 | d6 | d1 | d2 | Nr. / No. | |
|---------|----|------|----|----|------|------|------|----|--------|--------|------------------|------------------|
| 250 bar | 19 | 34 | 12 | 12 | 4.7 | 4.7 | 19 | 19 | G 1/4" | G 1/4" | E 7103/ 1/4/ 1/4 | |
| | | 34.5 | | | 7.9 | | | | | | 22 | E 7103/ 3/8/ 1/4 |
| | 22 | 37 | 14 | 14 | 11.1 | 7.9 | 27 | 22 | G 3/8" | G 3/8" | E 7103/ 3/8/ 3/8 | |
| | | 41 | | | | | | | | | 11.1 | 27 |
| | 27 | 44 | 44 | 14 | 14 | 11.1 | 11.1 | 27 | 27 | G 1/2" | G 1/2" | E 7103/ 1/2/ 1/2 |
| | | | | | | | | | | | | |

1) DN: Nennweite / nominal diameter



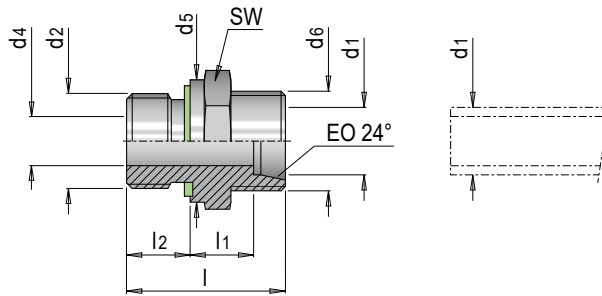
| d2 | d2 | l2 min. | d7 |
|--------|-------|---------|----|
| G 1/4" | 13.16 | 12 | 20 |
| G 3/8" | 16.66 | | 23 |
| G 1/2" | 20.96 | 14 | 28 |

E 7100



Einschraubstutzen gerade mit Dichtkegel EO 24°

Straight screw-in socket with sealing cone EO 24°



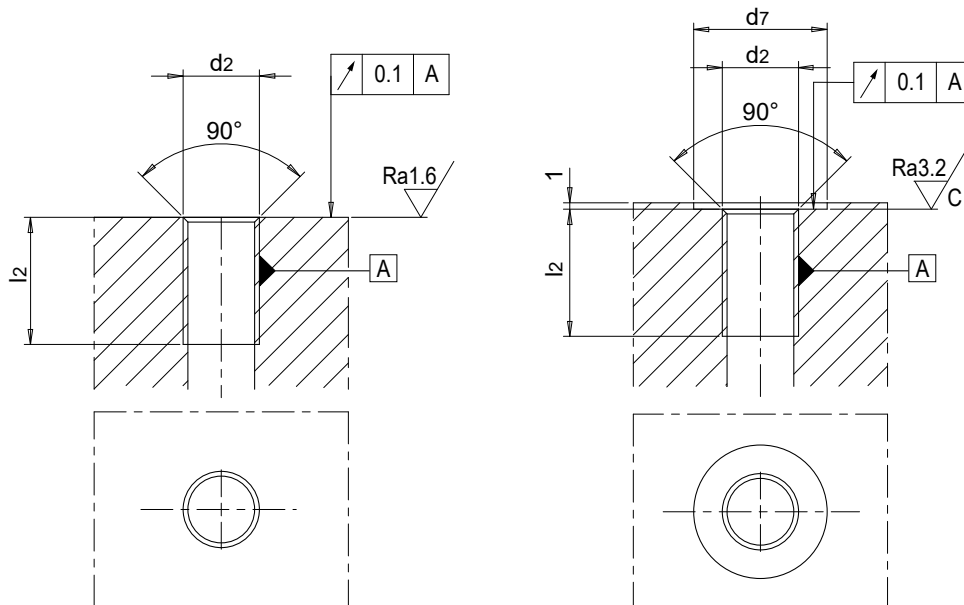
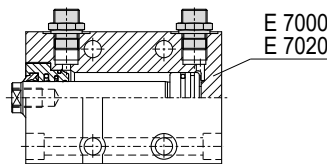
Mat.: Stahl Zink-Nickel-beschichtet / FKM (Viton)
zinc-nickel plated steel / FKM (Viton)



t max = 180°C

| l | l1 | l2 | d4 | d5 | d6 | SW | p max. | d1 | d2 | Ausführung / Design ¹⁾ | Nr. / No. |
|------|------|----|----|---------|---------|---------|-------------------|-------------------|-------------------|-----------------------------------|-------------------|
| 24.5 | 9.5 | 8 | 4 | 14 | M14x1.5 | 14 | 500 bar | 8 | G 1/8" | L | E 7100/ 8/ 1/8 /L |
| 29 | 10 | 12 | 6 | 19 | M16x1.5 | 19 | 420 bar | | G 1/4" | | E 7100/ 8/ 1/4 /L |
| 30.5 | 11.5 | | | 22 | | 22 | | | E 7100/ 8/ 3/8 /L | | |
| 30 | 11 | 19 | 19 | 500 bar | | 10 | G 1/4" | E 7100/10/ 1/4 /L | | | |
| 31.5 | 12.5 | 14 | 8 | 22 | M18x1.5 | 22 | 420 bar | G 3/8" | E 7100/10/ 3/8 /L | | |
| | | | | 9 | | 400 bar | | 12 | G 3/8" | | E 7100/12/ 3/8 /L |
| 34 | 13 | 10 | 27 | M22x1.5 | 27 | 800 bar | 15 | G 1/2" | S | E 7100/12/ 1/2 /L | |
| 35 | 14 | 11 | 19 | | | | | 8 | | G 1/4" | E 7100/15/ 1/2 /L |
| 34 | 15 | 5 | 19 | 800 bar | 8 | G 1/4" | E 7100/ 8/ 1/4 /S | | | | |
| 41 | 18.5 | 14 | 12 | 27 | M24x1.5 | 27 | 630 bar | 16 | | G 1/2" | E 7100/16/ 1/2 /S |

1) Ausführung: L = leichte Ausführung, S = schwere Ausführung / Design: L = light duty, S = heavy duty



| d2 | d2 [mm] | l2 min. | d7 |
|--------|---------|---------|----|
| G 1/8" | 9.73 | 8 | 15 |
| G 1/4" | 13.16 | 12 | 20 |
| G 3/8" | 16.66 | 14 | 23 |
| G 1/2" | 20.96 | 14 | 28 |